

RecomAb™

SAFB recombinant monoclonal antibody, clone R03-7A1

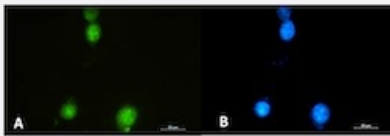
Catalog # RAB01929 Size 100 uL

Applications



Western Blot

Western blot analysis of rat brain lysates with SAFB recombinant monoclonal antibody, clone R03-7A1 (Cat # RAB01929).



Immunocytochemistry

Immunocytochemical staining of 293 with SAFB recombinant monoclonal antibody, clone R03-7A1 (Cat # RAB01929). (A) SAFB (green) and (B) DAPI (blue).

Specification

Product Description	Rabbit recombinant monoclonal antibody raised against human SAFB.
Antibody Species	Rabbit
Immunogen	Original antibody is raised against a synthetic peptide corresponding to human SAFB.
Theoretical MW (kDa)	Calculated MW: 103 k
Reactivity	Human, Mouse
Form	Liquid

Purification	Affinity purification
Isotype	IgG
Recommend Usage	Immunocytochemistry Immunofluorescence (1:50-1:200) Immunohistochemistry (1:50-1:100) Western Blot (1:500-1:1000) The optimal working dilution should be determined by the end user.
Storage Buffer	In 50 mM Tris-Glycine, pH 7.4 (0.15 M NaCl, 40% Glycerol, 0.01% Sodium azide and 0.05% BSA)
Storage Instruction	Store at -20 °C. Aliquot to avoid repeated freezing and thawing.
Note	This product contains sodium azide: a POISONOUS AND HAZARDOUS SUBSTANCE which should be handled by trained staff only.

Applications

- Western Blot

Western blot analysis of rat brain lysates with SAFB recombinant monoclonal antibody, clone R03-7A1 (Cat # RAB01929).

- Immunohistochemistry

- Immunocytochemistry

Immunocytochemical staining of 293 with SAFB recombinant monoclonal antibody, clone R03-7A1 (Cat # RAB01929). (A) SAFB (green) and (B) DAPI (blue).

- Immunofluorescence

Gene Info — SAFB

Entrez GeneID	6294
Protein Accession#	Q15424
Gene Name	SAFB
Gene Alias	DKFZp779C1727, HAP, HET, SAFB1
Gene Description	scaffold attachment factor B
Omim ID	602895

Gene Ontology

[Hyperlink](#)**Gene Summary**

This gene encodes a DNA-binding protein that has high specificity for scaffold or matrix attachment region DNA elements (S/MAR DNA). This protein is thought to be involved in attaching the base of chromatin loops to the nuclear matrix but there is conflicting evidence as to whether this protein is a component of chromatin or a nuclear matrix protein. Scaffold attachment factors are a specific subset of nuclear matrix proteins (NMP) that specifically bind to S/MAR. This encoded protein is thought to serve as a molecular base to assemble a 'transcriptosome complex' in the vicinity of actively transcribed genes. It is involved in the regulation of the heat shock protein 27 transcription and also can act as an estrogen receptor corepressor. This gene is a candidate gene for breast tumorigenesis. [provided by RefSeq]

Other Designations

HSP27 ERE-TATA-binding protein|Hsp27 ERE-TATA binding protein|glutathione S-transferase fusion protein|heat-shock protein (HSP27) estrogen response element and TATA box-binding protein|scaffold attachment factor B1