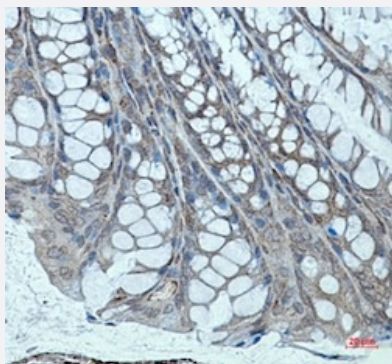


RecomAb™

# ACTN2 recombinant monoclonal antibody, clone R05-7J8

Catalog # RAB01928      Size 100 uL

## Applications



### Immunohistochemistry (Formalin/PFA-fixed paraffin-embedded sections)

Immunohistochemical staining (Formalin/PFA-fixed paraffin-embedded sections) of mouse colon with ACTN2 recombinant monoclonal antibody, clone R05-7J8 (Cat # RAB01928).

High-pressure and temperature Sodium Citrate pH 6.0 was used for antigen retrieval.

## Specification

<b>Product Description</b>	Rabbit recombinant monoclonal antibody raised against human ACTN2.
<b>Antibody Species</b>	Rabbit
<b>Immunogen</b>	Original antibody is raised against a synthetic peptide corresponding to human ACTN2.
<b>Theoretical MW (kDa)</b>	Calculated MW: 104 k
<b>Reactivity</b>	Human, Mouse, Rat
<b>Form</b>	Liquid
<b>Purification</b>	Affinity purification
<b>Isotype</b>	IgG
<b>Recommend Usage</b>	Immunohistochemistry (1:50-1:100) Immunoprecipitation (1:20) Western Blot (1:500-1:1000) The optimal working dilution should be determined by the end user.

<b>Storage Buffer</b>	In 50 mM Tris-Glycine, pH 7.4 (0.15 M NaCl, 40% Glycerol, 0.01% Sodium azide and 0.05% BSA)
<b>Storage Instruction</b>	Store at -20 °C. Aliquot to avoid repeated freezing and thawing.
<b>Note</b>	This product contains sodium azide: a POISONOUS AND HAZARDOUS SUBSTANCE which should be handled by trained staff only.

## Applications

- Western Blot
- Immunohistochemistry (Formalin/PFA-fixed paraffin-embedded sections)

Immunohistochemical staining (Formalin/PFA-fixed paraffin-embedded sections) of mouse colon with ACTN2 recombinant monoclonal antibody, clone R05-7J8 (Cat # RAB01928).

High-pressure and temperature Sodium Citrate pH 6.0 was used for antigen retrieval.

- Immunoprecipitation

## Gene Info — ACTN2

<b>Entrez GeneID</b>	<a href="#">88</a>
<b>Protein Accession#</b>	<a href="#">P35609</a>
<b>Gene Name</b>	ACTN2
<b>Gene Alias</b>	CMD1AA
<b>Gene Description</b>	actinin, alpha 2
<b>Omim ID</b>	<a href="#">102573</a>
<b>Gene Ontology</b>	<a href="#">Hyperlink</a>
<b>Gene Summary</b>	Alpha actinins belong to the spectrin gene superfamily which represents a diverse group of cytoskeletal proteins, including the alpha and beta spectrins and dystrophins. Alpha actinin is an actin-binding protein with multiple roles in different cell types. In nonmuscle cells, the cytoskeletal isoform is found along microfilament bundles and adherens-type junctions, where it is involved in binding actin to the membrane. In contrast, skeletal, cardiac, and smooth muscle isoforms are localized to the Z-disc and analogous dense bodies, where they help anchor the myofibrillar actin filaments. The gene encodes a muscle-specific, alpha actinin isoform that is expressed in both skeletal and cardiac muscles. [provided by RefSeq]
<b>Other Designations</b>	F-actin cross-linking protein OTTHUMP00000037963 alpha-actinin skeletal muscle

## Pathway

- [Adherens junction](#)
- [Arrhythmogenic right ventricular cardiomyopathy \(ARVC\)](#)
- [Focal adhesion](#)
- [Leukocyte transendothelial migration](#)
- [Regulation of actin cytoskeleton](#)
- [Systemic lupus erythematosus](#)
- [Tight junction](#)

## Disease

- [Cardiomyopathy](#)
- [Genetic Predisposition to Disease](#)
- [Mental Disorders](#)
- [Tobacco Use Disorder](#)