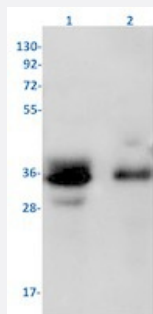


RecomAb™

# SRSF2 recombinant monoclonal antibody, clone R04-7J2

Catalog # RAB01927      Size 100 uL

## Applications



### Western Blot

Western blot analysis of Lane 1: C6 and Lane 2: MCF-7 lysates with SRSF2 recombinant monoclonal antibody, clone R04-7J2 (Cat # RAB01927).

## Specification

<b>Product Description</b>	Rabbit recombinant monoclonal antibody raised against human SRSF2.
<b>Antibody Species</b>	Rabbit
<b>Immunogen</b>	Original antibody is raised against a synthetic peptide corresponding to human SRSF2.
<b>Theoretical MW (kDa)</b>	Calculated MW: 25 kD
<b>Reactivity</b>	Human, Rat
<b>Form</b>	Liquid
<b>Purification</b>	Affinity purification
<b>Isotype</b>	IgG
<b>Recommend Usage</b>	Immunohistochemistry (1:50-1:100) Immunoprecipitation (1:20) Western Blot (1:500-1:1000) The optimal working dilution should be determined by the end user.
<b>Storage Buffer</b>	In 50 mM Tris-Glycine, pH 7.4 (0.15 M NaCl, 40% Glycerol, 0.01% Sodium azide and 0.05% BSA)

**Storage Instruction**

Store at -20 °C.  
Aliquot to avoid repeated freezing and thawing.

**Note**

This product contains sodium azide: a POISONOUS AND HAZARDOUS SUBSTANCE which should be handled by trained staff only.

## Applications

- Western Blot

Western blot analysis of Lane 1: C6 and Lane 2: MCF-7 lysates with SRSF2 recombinant monoclonal antibody, clone R04-7J2 (Cat # RAB01927).

- Immunohistochemistry (Formalin/PFA-fixed paraffin-embedded sections)

- Immunoprecipitation

## Gene Info — SFRS2

**Entrez GeneID** [6427](#)

**Protein Accession#** [Q01130](#)

**Gene Name** SFRS2

**Gene Alias** PR264, SC-35, SC35, SFRS2A, SRp30b

**Gene Description** splicing factor, arginine/serine-rich 2

**Omim ID** [600813](#)

**Gene Ontology** [Hyperlink](#)

**Gene Summary** O

**Other Designations** -