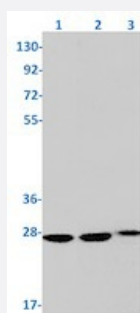


RecomAb™

PTTG1 recombinant monoclonal antibody, clone R09-6J7

Catalog # RAB01921 Size 100 uL

Applications



Western Blot

Western blot analysis of Lane 1: K562, Lane 2: 3T3 and Lane 3: Hela lysates with PTTG1 recombinant monoclonal antibody, clone R09-6J7 (Cat # RAB01921).

Specification

Product Description	Rabbit recombinant monoclonal antibody raised against human PTTG1.
Antibody Species	Rabbit
Immunogen	Original antibody is raised against a synthetic peptide corresponding to human PTTG1.
Theoretical MW (kDa)	Calculated MW: 22 kD
Reactivity	Human, Mouse
Form	Liquid
Purification	Affinity purification
Isotype	IgG
Recommend Usage	Immunohistochemistry (1:50-1:100) Immunoprecipitation (1:20) Western Blot (1:500-1:1000) The optimal working dilution should be determined by the end user.
Storage Buffer	In 50 mM Tris-Glycine, pH 7.4 (0.15 M NaCl, 40% Glycerol, 0.01% Sodium azide and 0.05% BSA)

Storage Instruction

Store at -20 °C.
Aliquot to avoid repeated freezing and thawing.

Note

This product contains sodium azide: a POISONOUS AND HAZARDOUS SUBSTANCE which should be handled by trained staff only.

Applications

- Western Blot

Western blot analysis of Lane 1: K562, Lane 2: 3T3 and Lane 3: HeLa lysates with PTTG1 recombinant monoclonal antibody, clone R09-6J7 (Cat # RAB01921).

- Immunohistochemistry

- Immunoprecipitation

Gene Info — PTTG1

Entrez GeneID [9232](#)

Protein Accession# [O95997](#)

Gene Name PTTG1

Gene Alias EAP1, HPTTG, MGC126883, MGC138276, PTTG, TUTR1

Gene Description pituitary tumor-transforming 1

Omim ID [604147](#)

Gene Ontology [Hyperlink](#)

Gene Summary

The encoded protein is a homolog of yeast securin proteins, which prevent separins from promoting sister chromatid separation. It is an anaphase-promoting complex (APC) substrate that associates with a separin until activation of the APC. The gene product has transforming activity in vitro and tumorigenic activity in vivo, and the gene is highly expressed in various tumors. The gene product contains 2 PXXP motifs, which are required for its transforming and tumorigenic activities, as well as for its stimulation of basic fibroblast growth factor expression. It also contains a destruction box (D box) that is required for its degradation by the APC. The acidic C-terminal region of the encoded protein can act as a transactivation domain. The gene product is mainly a cytosolic protein, although it partially localizes in the nucleus. [provided by RefSeq]

Other Designations

ESP1-associated protein 1|OTTHUMP00000160845|pituitary tumor-transforming protein 1|securin|tumor-transforming protein 1

Pathway

- [Cell cycle](#)

Disease

- [Breast cancer](#)
- [Breast Neoplasms](#)
- [Carcinoma](#)
- [Chromosomal Instability](#)
- [Genetic Predisposition to Disease](#)
- [Narcolepsy](#)
- [Ovarian Neoplasms](#)
- [Psoriasis](#)