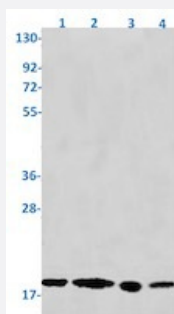


RecomAb™

SKP1 recombinant monoclonal antibody, clone R01-6H2

Catalog # RAB01909 Size 100 uL

Applications



Western Blot

Western blot analysis of Lane1: K562, Lane2 rat brain, Lane3: C6 and Lane4: 3T3 lysates with SKP1 recombinant monoclonal antibody, clone R01-6H2 (Cat # RAB01909).

Specification

Product Description	Rabbit recombinant monoclonal antibody raised against human SKP1.
Antibody Species	Rabbit
Immunogen	Original antibody is raised against a synthetic peptide corresponding to human SKP1.
Theoretical MW (kDa)	Calculated MW: 19 kD
Reactivity	Human, Mouse, Rat
Form	Liquid
Purification	Affinity purification
Isotype	IgG
Recommend Usage	Immunofluorescence (1:50-1:200) Western Blot (1:500-1:1000) The optimal working dilution should be determined by the end user.
Storage Buffer	In 50 mM Tris-Glycine, pH 7.4 (0.15 M NaCl, 40% Glycerol, 0.01% Sodium azide and 0.05% BSA)

Storage Instruction

Store at -20 °C.
Aliquot to avoid repeated freezing and thawing.

Note

This product contains sodium azide: a POISONOUS AND HAZARDOUS SUBSTANCE which should be handled by trained staff only.

Applications

- Western Blot

Western blot analysis of Lane1: K562, Lane2 rat brain, Lane3: C6 and Lane4: 3T3 lysates with SKP1 recombinant monoclonal antibody, clone R01-6H2 (Cat # RAB01909).

- Immunofluorescence

Gene Info — SKP1

Entrez GeneID[6500](#)**Protein Accession#**[P63208](#)**Gene Name**

SKP1

Gene Alias

EMC19, MGC34403, OCP-II, OCP2, SKP1A, TCEB1L, p19A

Gene Description

S-phase kinase-associated protein 1

Omim ID[601434](#)**Gene Ontology**[Hyperlink](#)**Gene Summary**

This gene encodes a component of SCF complexes, which are composed of this protein, cullin 1, a ring-box protein, and one member of the F-box family of proteins. This protein binds directly to the F-box motif found in F-box proteins. SCF complexes are involved in the regulated ubiquitination of specific protein substrates, which targets them for degradation by the proteasome. Specific F-box proteins recognize different target protein(s), and many specific SCF substrates have been identified including regulators of cell cycle progression and development. Studies have also characterized the protein as an RNA polymerase II elongation factor. Alternative splicing of this gene results in two transcript variants. A related pseudogene has been identified on chromosome 7. [provided by RefSeq]

Other Designations

RNA polymerase II elongation factor-like protein OCP2|cyclin A/CDK2-associated p19|organ of Corti protein 2|transcription elongation factor B (SIII), polypeptide 1-like

Pathway

- [Cell cycle](#)
- [TGF-beta signaling pathway](#)
- [Ubiquitin mediated proteolysis](#)
- [Wnt signaling pathway](#)

Disease

- [Tobacco Use Disorder](#)