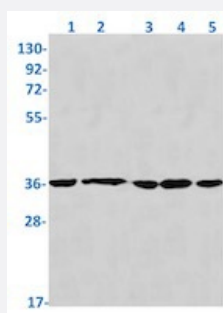


RecomAb™

# STUB1 recombinant monoclonal antibody, clone R05-5F5

Catalog # RAB01886      Size 100 uL

## Applications



### Western Blot

Western blot analysis of Lane1: K562, Lane2: rat brain, Lane3: C6, Lane4: 3T3 and Lane5: Hela lysates with STUB1 recombinant monoclonal antibody, clone R05-5F5 (Cat # RAB01886).

## Specification

Product Description	Rabbit recombinant monoclonal antibody raised against human STUB1.
Antibody Species	Rabbit
Immunogen	Original antibody is raised against a synthetic peptide corresponding to human STUB1.
Theoretical MW (kDa)	Calculated MW: 35 kD
Reactivity	Human, Mouse, Rat
Form	Liquid
Purification	Affinity purification
Isotype	IgG
Recommend Usage	Immunofluorescence (1:50-1:200) Immunoprecipitation (1:20) Western Blot (1:500-1:1000) The optimal working dilution should be determined by the end user.
Storage Buffer	In 50 mM Tris-Glycine, pH 7.4 (0.15 M NaCl, 40% Glycerol, 0.01% Sodium azide and 0.05% BSA)

**Storage Instruction**

Store at -20 °C.  
Aliquot to avoid repeated freezing and thawing.

**Note**

This product contains sodium azide: a POISONOUS AND HAZARDOUS SUBSTANCE which should be handled by trained staff only.

## Applications

- Western Blot

Western blot analysis of Lane1: K562, Lane2: rat brain, Lane3: C6, Lane4: 3T3 and Lane5: Hela lysates with STUB1 recombinant monoclonal antibody, clone R05-5F5 (Cat # RAB01886).

- Immunofluorescence

- Immunoprecipitation

## Gene Info — STUB1

**Entrez GeneID** [10273](#)

**Protein Accession#** [Q9UNE7](#)

**Gene Name** STUB1

**Gene Alias** CHIP, HSPABP2, NY-CO-7, SDCCAG7, UBOX1

**Gene Description** STIP1 homology and U-box containing protein 1

**Omim ID** [607207](#)

**Gene Ontology** [Hyperlink](#)

**Gene Summary** STUB1, or CHIP, is a ubiquitin ligase/cochaperone that participates in protein quality control by targeting a broad range of chaperone protein substrates for degradation (Min et al., 2008 [PubMed 18411298]).[supplied by OMIM]

**Other Designations** heat shock protein A binding protein 2 (c-terminal)|serologically defined colon cancer antigen 7

## Pathway

- [Ubiquitin mediated proteolysis](#)