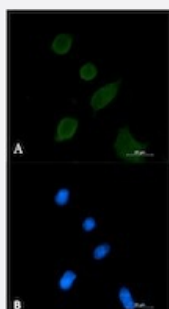


RecomAb™

SYP recombinant monoclonal antibody, clone R06-2A2

Catalog # RAB01881 Size 100 uL

Applications



Immunocytochemistry

Immunocytochemical staining of 3T3 with SYP recombinant monoclonal antibody, clone R06-2A2 (Cat # RAB01881). (A) SYP (green) and (B) DAPI (blue).

Specification

Product Description	Rabbit recombinant monoclonal antibody raised against human SYP.
Antibody Species	Rabbit
Immunogen	Original antibody is raised against a synthetic peptide corresponding to human SYP.
Theoretical MW (kDa)	Calculated MW: 34 kD
Reactivity	Human, Rat
Form	Liquid
Purification	Affinity purification
Isotype	IgG
Recommend Usage	Immunocytochemistry Immunofluorescence (1:50-1:200) Immunohistochemistry (1:50-1:100) Western Blot (1:500-1:1000) The optimal working dilution should be determined by the end user.

Storage Buffer	In 50 mM Tris-Glycine, pH 7.4 (0.15 M NaCl, 40% Glycerol, 0.01% Sodium azide and 0.05% BSA)
Storage Instruction	Store at -20 °C. Aliquot to avoid repeated freezing and thawing.
Note	This product contains sodium azide: a POISONOUS AND HAZARDOUS SUBSTANCE which should be handled by trained staff only.

Applications

- Western Blot
- Immunohistochemistry
- Immunocytochemistry

Immunocytochemical staining of 3T3 with SYP recombinant monoclonal antibody, clone R06-2A2 (Cat # RAB01881). (A) SYP (green) and (B) DAPI (blue).

- Immunofluorescence

Gene Info — SYP

Entrez GeneID	6855
Protein Accession#	P08247
Gene Name	SYP
Gene Alias	-
Gene Description	synaptophysin
Omim ID	313475
Gene Ontology	Hyperlink
Gene Summary	Synaptophysin (p38) is an integral membrane protein of small synaptic vesicles in brain and endocrine cells.[supplied by OMIM]
Other Designations	major synaptic vesicle protein P38

Disease

- [Attention Deficit Disorder with Hyperactivity](#)
- [Genetic Predisposition to Disease](#)