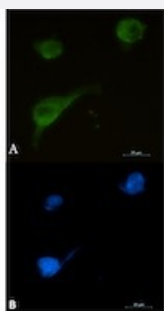


RecomAb™

SNTA1 recombinant monoclonal antibody, clone R03-4E7

Catalog # RAB01879 Size 100 uL

Applications



Immunocytochemistry

Immunocytochemical staining of U87-MG with SNTA1 recombinant monoclonal antibody, clone R03-4E7 (Cat # RAB01879). (A) SNTA1 (green) and (B) DAPI (blue).

Specification

Product Description	Rabbit recombinant monoclonal antibody raised against human SNTA1.
Antibody Species	Rabbit
Immunogen	Original antibody is raised against a synthetic peptide corresponding to human SNTA1.
Theoretical MW (kDa)	Calculated MW: 54 kD
Reactivity	Human
Form	Liquid
Purification	Affinity purification
Isotype	IgG
Recommend Usage	Immunocytochemistry Immunofluorescence (1:50-1:200) Immunohistochemistry (1:50-1:100) Western Blot (1:500-1:1000) The optimal working dilution should be determined by the end user.

Storage Buffer	In 50 mM Tris-Glycine, pH 7.4 (0.15 M NaCl, 40% Glycerol, 0.01% Sodium azide and 0.05% BSA)
Storage Instruction	Store at -20 °C. Aliquot to avoid repeated freezing and thawing.
Note	This product contains sodium azide: a POISONOUS AND HAZARDOUS SUBSTANCE which should be handled by trained staff only.

Applications

- Western Blot
- Immunohistochemistry
- Immunocytochemistry

Immunocytochemical staining of U87-MG with SNTA1 recombinant monoclonal antibody, clone R03-4E7 (Cat # RAB01879). (A) SNTA1 (green) and (B) DAPI (blue).

- Immunofluorescence

Gene Info — SNTA1

Entrez GeneID	6640
Protein Accession#	Q13424
Gene Name	SNTA1
Gene Alias	SNT1, TACIP1, dJ1187J4.5
Gene Description	syntrophin, alpha 1 (dystrophin-associated protein A1, 59kDa, acidic component)
Omim ID	601017
Gene Ontology	Hyperlink
Gene Summary	Dystrophin is a large, rod-like cytoskeletal protein found at the inner surface of muscle fibers. Dystrophin is missing in Duchenne Muscular Dystrophy patients and is present in reduced amounts in Becker Muscular Dystrophy patients. The protein encoded by this gene is a peripheral membrane protein found associated with dystrophin and dystrophin-related proteins. This gene is a member of the syntrophin gene family, which contains at least two other structurally-related genes. [provided by RefSeq]

Other Designations

OTTHUMP00000030650|acidic alpha 1 syntrophin|dystrophin-associated protein A1, 59kD, acidic component|pro-TGF-alpha cytoplasmic domain-interacting protein 1|syntrophin, alpha 1 (dystrophin-associated protein A1, 59kD, acidic component)

Disease

- [Disease Models](#)
- [Long QT syndrome](#)
- [Sudden Infant Death](#)