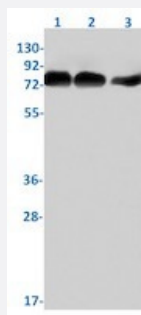


RecomAb™

# MAP3K7 (phospho Ser439) recombinant monoclonal antibody, clone R07-7K2

Catalog # RAB01877      Size 100 uL

## Applications



### Western Blot

Western blot analysis of Lane1: 3T3, Lane2: C6 and Lane3: MCF-7 lysates with MAP3K7 (phospho Ser439) recombinant monoclonal antibody, clone R07-7K2 (Cat # RAB01877).

## Specification

Product Description	Rabbit recombinant monoclonal antibody raised against human MAP3K7.
Antibody Species	Rabbit
Immunogen	Original antibody is raised against a synthetic phosphopeptide corresponding to residues surrounding Ser439 of human MAP3K7.
Theoretical MW (kDa)	Calculated MW: 67 kD
Reactivity	Human, Mouse, Rat
Form	Liquid
Purification	Affinity purification
Isotype	IgG

<b>Recommend Usage</b>	immunofluorescence (1:50-1:200) Immunoprecipitation (1:20) Western Blot (1:500-1:1000) The optimal working dilution should be determined by the end user.
<b>Storage Buffer</b>	In 50 mM Tris-Glycine, pH 7.4 (0.15 M NaCl, 40% Glycerol, 0.01% Sodium azide and 0.05% BSA)
<b>Storage Instruction</b>	Store at -20 °C. Aliquot to avoid repeated freezing and thawing.
<b>Note</b>	This product contains sodium azide: a POISONOUS AND HAZARDOUS SUBSTANCE which should be handled by trained staff only.

## Applications

- Western Blot

Western blot analysis of Lane1: 3T3, Lane2: C6 and Lane3: MCF-7 lysates with MAP3K7 (phospho Ser439) recombinant monoclonal antibody, clone R07-7K2 (Cat # RAB01877).

- Immunofluorescence

- Immunoprecipitation

## Gene Info — MAP3K7

<b>Entrez GeneID</b>	<a href="#">6885</a>
<b>Protein Accession#</b>	<a href="#">O43318</a>
<b>Gene Name</b>	MAP3K7
<b>Gene Alias</b>	TAK1, TGF1a
<b>Gene Description</b>	mitogen-activated protein kinase kinase kinase 7
<b>Omim ID</b>	<a href="#">602614</a>
<b>Gene Ontology</b>	<a href="#">Hyperlink</a>

**Gene Summary**

The protein encoded by this gene is a member of the serine/threonine protein kinase family. This kinase mediates the signaling transduction induced by TGF beta and morphogenetic protein (BMP), and controls a variety of cell functions including transcription regulation and apoptosis. In response to IL-1, this protein forms a kinase complex including TRAF6, MAP3K7P1/TAB1 and MAP3K7P2/TAB2; this complex is required for the activation of nuclear factor kappa B. This kinase can also activate MAPK8/JNK, MAP2K4/MKK4, and thus plays a role in the cell response to environmental stresses. Four alternatively spliced transcript variants encoding distinct isoforms have been reported. [provided by RefSeq]

**Other Designations**

OTTHUMP00000016870|OTTHUMP00000016871|OTTHUMP00000016872|OTTHUMP00000016873|TGF-beta activated kinase 1|transforming growth factor-beta-activated kinase 1

## Pathway

- [Adherens junction](#)
- [MAPK signaling pathway](#)
- [T cell receptor signaling pathway](#)
- [Toll-like receptor signaling pathway](#)
- [Wnt signaling pathway](#)

## Disease

- [Arthritis](#)
- [Crohn Disease](#)
- [Genetic Predisposition to Disease](#)
- [Inflammatory Bowel Diseases](#)
- [Narcolepsy](#)
- [Tobacco Use Disorder](#)