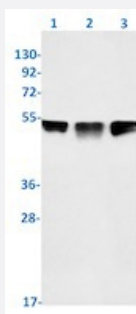


RecomAb™

TEAD1 recombinant monoclonal antibody, clone R05-1H3

Catalog # RAB01870 Size 100 uL

Applications



Western Blot

Western blot analysis of Lane1: C6, Lane2: CHO-K1 and Lane3: Hela lysates with TEAD1 recombinant monoclonal antibody, clone R05-1H3 (Cat # RAB01870).

Specification

Product Description	Rabbit recombinant monoclonal antibody raised against human TEAD1.
Antibody Species	Rabbit
Immunogen	Original antibody is raised against a synthetic peptide corresponding to human TEAD1.
Theoretical MW (kDa)	Calculated MW: 48 kD
Reactivity	Hamster, Human, Rat
Form	Liquid
Purification	Affinity purification
Isotype	IgG
Recommend Usage	Western Blot (1:500-1:1000) The optimal working dilution should be determined by the end user.
Storage Buffer	In 50 mM Tris-Glycine, pH 7.4 (0.15 M NaCl, 40% Glycerol, 0.01% Sodium azide and 0.05% BSA)

Storage Instruction

Store at -20 °C.
Aliquot to avoid repeated freezing and thawing.

Note

This product contains sodium azide: a POISONOUS AND HAZARDOUS SUBSTANCE which should be handled by trained staff only.

Applications

- Western Blot

Western blot analysis of Lane1: C6, Lane2: CHO-K1 and Lane3: Hela lysates with TEAD1 recombinant monoclonal antibody, clone R05-1H3 (Cat # RAB01870).

Gene Info — TEAD1

Entrez GeneID[7003](#)**Protein Accession#**[P28347](#)**Gene Name**

TEAD1

Gene Alias

AA, REF1, TCF13, TEF-1

Gene Description

TEA domain family member 1 (SV40 transcriptional enhancer factor)

Omim ID[108985 189967](#)**Gene Ontology**[Hyperlink](#)**Gene Summary**

peripapillary chorioretinal degeneration|transcription factor 13|transcriptional enhancer factor 1

Other Designations

SV40 transcriptional enhancer factor|TEA domain family member 1|atrophia areata, peripapillary chorioretinal degeneration|transcription factor 13|transcriptional enhancer factor 1

Disease

- [Tobacco Use Disorder](#)