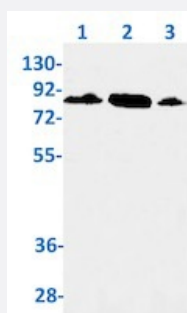


RecomAb™

# UBA2 recombinant monoclonal antibody, clone R08-6D4

Catalog # RAB01847      Size 100 uL

## Applications



### Western Blot

Western blot analysis of Lane1: rat brain, Lane2: C6 and Lane3: Hela lysates with UBA2 recombinant monoclonal antibody, clone R08-6D4 (Cat # RAB01847).

## Specification

<b>Product Description</b>	Rabbit recombinant monoclonal antibody raised against human UBA2.
<b>Antibody Species</b>	Rabbit
<b>Immunogen</b>	Original antibody is raised against a synthetic peptide corresponding to human UBA2.
<b>Theoretical MW (kDa)</b>	Calculated MW: 71 kD
<b>Reactivity</b>	Human, Rat
<b>Form</b>	Liquid
<b>Purification</b>	Affinity purification
<b>Isotype</b>	IgG
<b>Recommend Usage</b>	Immunofluorescence (1:50-1:200) Immunoprecipitation (1:20) Western Blot (1:500-1:1000) The optimal working dilution should be determined by the end user.
<b>Storage Buffer</b>	In 50 mM Tris-Glycine, pH 7.4 (0.15 M NaCl, 40% Glycerol, 0.01% Sodium azide and 0.05% BSA)

**Storage Instruction**

Store at -20 °C.  
Aliquot to avoid repeated freezing and thawing.

**Note**

This product contains sodium azide: a POISONOUS AND HAZARDOUS SUBSTANCE which should be handled by trained staff only.

## Applications

- Western Blot

Western blot analysis of Lane1: rat brain, Lane2: C6 and Lane3: Hela lysates with UBA2 recombinant monoclonal antibody, clone R08-6D4 (Cat # RAB01847).

- Immunofluorescence

- Immunoprecipitation

## Gene Info — UBA2

**Entrez GeneID** [10054](#)

**Protein Accession#** [Q9UBT2](#)

**Gene Name** UBA2

**Gene Alias** ARX, FLJ13058, HRIHFB2115, SAE2

**Gene Description** ubiquitin-like modifier activating enzyme 2

**Gene Ontology** [Hyperlink](#)

**Gene Summary** ubiquitin-activating enzyme E1 homolog|anthracycline-associated resistance

**Other Designations** SUMO-1 activating enzyme subunit 2|SUMO1 activating enzyme subunit 2|UBA2, ubiquitin-activating enzyme E1 homolog|anthracycline-associated resistance

## Pathway

- [Ubiquitin mediated proteolysis](#)