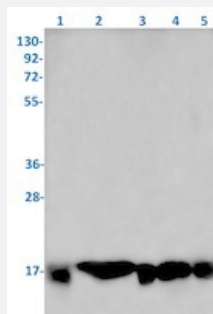


RecomAb™

UBE2D3 recombinant monoclonal antibody, clone R01-4J4

Catalog # RAB01846 Size 100 uL

Applications



Western Blot

Western blot analysis of Lane1: K562, Lane2: rat brain, Lane3: C6, Lane4: 3T3 and Lane5: Hela lysates with UBE2D3 recombinant monoclonal antibody, clone R01-4J4 (Cat # RAB01846).

Specification

Product Description	Rabbit recombinant monoclonal antibody raised against human UBE2D3.
Antibody Species	Rabbit
Immunogen	Original antibody is raised against a synthetic peptide corresponding to human UBE2D3.
Theoretical MW (kDa)	Calculated MW: 17 kD
Reactivity	Human, Mouse, Rat
Form	Liquid
Purification	Affinity purification
Isotype	IgG
Recommend Usage	Immunoprecipitation (1:20) Western Blot (1:500-1:1000) The optimal working dilution should be determined by the end user.
Storage Buffer	In 50 mM Tris-Glycine, pH 7.4 (0.15 M NaCl, 40% Glycerol, 0.01% Sodium azide and 0.05% BSA)

Storage Instruction

Store at -20 °C.
Aliquot to avoid repeated freezing and thawing.

Note

This product contains sodium azide: a POISONOUS AND HAZARDOUS SUBSTANCE which should be handled by trained staff only.

Applications

- Western Blot

Western blot analysis of Lane1: K562, Lane2: rat brain, Lane3: C6, Lane4: 3T3 and Lane5: Hela lysates with UBE2D3 recombinant monoclonal antibody, clone R01-4J4 (Cat # RAB01846).

- Immunoprecipitation

Gene Info — UBE2D3

Entrez GeneID[7323](#)**Protein Accession#**[P61077](#)**Gene Name**

UBE2D3

Gene Alias

E2(17)KB3, MGC43926, MGC5416, UBC4/5, UBCH5C

Gene Description

ubiquitin-conjugating enzyme E2D 3 (UBC4/5 homolog, yeast)

Omim ID[602963](#)**Gene Ontology**[Hyperlink](#)**Gene Summary**

The modification of proteins with ubiquitin is an important cellular mechanism for targeting abnormal or short-lived proteins for degradation. Ubiquitination involves at least three classes of enzymes: ubiquitin-activating enzymes, or E1s, ubiquitin-conjugating enzymes, or E2s, and ubiquitin-protein ligases, or E3s. This gene encodes a member of the E2 ubiquitin-conjugating enzyme family. This enzyme functions in the ubiquitination of the tumor-suppressor protein p53, which is induced by an E3 ubiquitin-protein ligase. Multiple spliced transcript variants have been found for this gene, but the full-length nature of some variants has not been determined. [provided by RefSeq]

Other Designations

OTTHUMP00000161758|OTTHUMP00000161759|ubiquitin carrier protein|ubiquitin-conjugating enzyme E2-17 kDa 3|ubiquitin-conjugating enzyme E2D 3|ubiquitin-conjugating enzyme E2D 3 (homologous to yeast UBC4/5)

Pathway

- [Ubiquitin mediated proteolysis](#)

Disease

- [Alcoholism](#)
- [Genetic Predisposition to Disease](#)