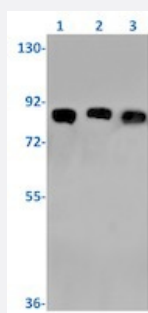


RecomAb™

VCP recombinant monoclonal antibody, clone R06-9D7

Catalog # RAB01837 Size 100 uL

Applications



Western Blot

Western blot analysis of Lane1: MCF-7, Lane2: C6 and Lane3: 3T3 lysates with VCP recombinant monoclonal antibody, clone R06-9D7 (Cat # RAB01837).

Specification

Product Description	Rabbit recombinant monoclonal antibody raised against human VCP.
Antibody Species	Rabbit
Immunogen	Original antibody is raised against a synthetic peptide corresponding to human VCP.
Theoretical MW (kDa)	Calculated MW: 89 kD
Reactivity	Human, Mouse, Rat
Form	Liquid
Purification	Affinity purification
Isotype	IgG
Recommend Usage	Immunofluorescence (1:50-1:200) Immunohistochemistry (1:50-1:100) Immunoprecipitation (1:20) Western Blot (1:500-1:1000) The optimal working dilution should be determined by the end user.

Storage Buffer	In 50 mM Tris-Glycine, pH 7.4 (0.15 M NaCl, 40% Glycerol, 0.01% Sodium azide and 0.05% BSA)
Storage Instruction	Store at -20 °C. Aliquot to avoid repeated freezing and thawing.
Note	This product contains sodium azide: a POISONOUS AND HAZARDOUS SUBSTANCE which should be handled by trained staff only.

Applications

- Western Blot

Western blot analysis of Lane1: MCF-7, Lane2: C6 and Lane3: 3T3 lysates with VCP recombinant monoclonal antibody, clone R06-9D7 (Cat # RAB01837).

- Immunohistochemistry

- Immunofluorescence

- Immunoprecipitation

Gene Info — VCP

Entrez GeneID	7415
Protein Accession#	P55072
Gene Name	VCP
Gene Alias	IBMPFD, MGC131997, MGC148092, MGC8560, TERA, p97
Gene Description	valosin-containing protein
Omim ID	167320 601023
Gene Ontology	Hyperlink
Gene Summary	The protein encoded by this gene is a member of a family that includes putative ATP-binding proteins involved in vesicle transport and fusion, 26S proteasome function, and assembly of peroxisomes. This protein, as a structural protein, is associated with clathrin, and heat-shock protein Hsc70, to form a complex. It has been implicated in a number of cellular events that are regulated during mitosis, including homotypic membrane fusion, spindle pole body function, and ubiquitin-dependent protein degradation. [provided by RefSeq]
Other Designations	transitional endoplasmic reticulum ATPase yeast Cdc48p homolog

Disease

- [Amyotrophic Lateral Sclerosis](#)
- [Cardiovascular Diseases](#)
- [Dementia](#)
- [Diabetes Mellitus](#)
- [Edema](#)
- [Genetic Predisposition to Disease](#)