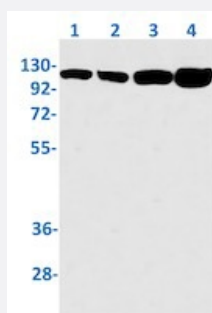


RecomAb™

VCL recombinant monoclonal antibody, clone R09-1F3

Catalog # RAB01832 Size 100 uL

Applications



Western Blot

Western blot analysis of Lane1: K562, Lane2: C6, Lane3: 3T3 and Lane4: HeLa lysates with VCL recombinant monoclonal antibody, clone R09-1F3 (Cat # RAB01832).

Specification

Product Description	Rabbit recombinant monoclonal antibody raised against human VCL.
Antibody Species	Rabbit
Immunogen	Original antibody is raised against recombinant protein corresponding to human VCL.
Theoretical MW (kDa)	Calculated MW: 124 k
Reactivity	Human, Mouse, Rat
Form	Liquid
Purification	Affinity purification
Isotype	IgG
Recommend Usage	Immunohistochemistry (1:50-1:100) Western Blot (1:500-1:1000) The optimal working dilution should be determined by the end user.
Storage Buffer	In 50 mM Tris-Glycine, pH 7.4 (0.15 M NaCl, 40% Glycerol, 0.01% Sodium azide and 0.05% BSA)

Storage Instruction

Store at -20 °C.
Aliquot to avoid repeated freezing and thawing.

Note

This product contains sodium azide: a POISONOUS AND HAZARDOUS SUBSTANCE which should be handled by trained staff only.

Applications

- Western Blot

Western blot analysis of Lane1: K562, Lane2: C6, Lane3: 3T3 and Lane4: Hela lysates with VCL recombinant monoclonal antibody, clone R09-1F3 (Cat # RAB01832).

- Immunohistochemistry (Formalin/PFA-fixed paraffin-embedded sections)

Gene Info — VCL

Entrez GeneID
[7414](#)
Protein Accession#
[P18206](#)
Gene Name

VCL

Gene Alias

CMD1W, MVCL

Gene Description

vinculin

Omim ID
[193065 611407](#)
Gene Ontology
[Hyperlink](#)
Gene Summary

Vinculin is a cytoskeletal protein associated with cell-cell and cell-matrix junctions, where it is thought to function as one of several interacting proteins involved in anchoring F-actin to the membrane. Defects in VCL are the cause of cardiomyopathy dilated type 1W. Dilated cardiomyopathy is a disorder characterized by ventricular dilation and impaired systolic function, resulting in congestive heart failure and arrhythmia. Multiple alternatively spliced transcript variants have been found for this gene, but the biological validity of some variants has not been determined. [provided by RefSeq]

Other Designations

OTTHUMP00000019861|OTTHUMP00000043885|metavinculin

Pathway

- [Adherens junction](#)

- [Focal adhesion](#)
- [Leukocyte transendothelial migration](#)
- [Regulation of actin cytoskeleton](#)

Disease

- [Alzheimer Disease](#)
- [Cardiomyopathy](#)
- [Cardiovascular Diseases](#)
- [Cleft Lip](#)
- [Cleft Palate](#)
- [Diabetes Mellitus](#)
- [Edema](#)
- [Genetic Predisposition to Disease](#)