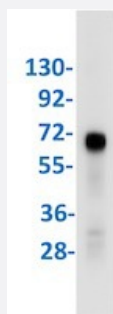


RecomAb™

YAP1 recombinant monoclonal antibody, clone R06-6H7

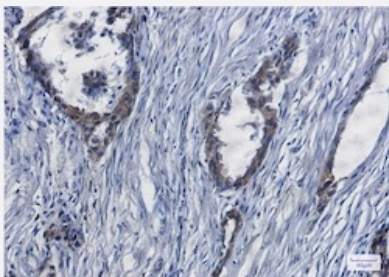
Catalog # RAB01818 Size 100 uL

Applications



Western Blot

Western blot analysis of HeLa lysates with YAP1 recombinant monoclonal antibody, clone R06-6H7 (Cat # RAB01818).



Immunohistochemistry (Formalin/PFA-fixed paraffin-embedded sections)

Immunohistochemical staining (Formalin/PFA-fixed paraffin-embedded sections) of human lung cancer with YAP1 recombinant monoclonal antibody, clone R06-6H7 (Cat # RAB01818). High-pressure and temperature Sodium Citrate pH 6.0 was used for antigen retrieval.

Specification

Product Description	Rabbit recombinant monoclonal antibody raised against human YAP1.
Antibody Species	Rabbit
Immunogen	Original antibody is raised against a synthetic peptide corresponding to human YAP1.
Theoretical MW (kDa)	Calculated MW: 54 kD
Reactivity	Human
Form	Liquid

Purification	Affinity purification
Isotype	IgG
Recommend Usage	Immunohistochemistry (1:50-1/100) Immunoprecipitation (1:20) Western Blot (1:500-1:1000) The optimal working dilution should be determined by the end user.
Storage Buffer	In 50 mM Tris-Glycine, pH 7.4 (0.15 M NaCl, 40% Glycerol, 0.01% Sodium azide and 0.05% BSA)
Storage Instruction	Store at -20 °C. Aliquot to avoid repeated freezing and thawing.
Note	This product contains sodium azide: a POISONOUS AND HAZARDOUS SUBSTANCE which should be handled by trained staff only.

Applications

- Western Blot

Western blot analysis of Hela lysates with YAP1 recombinant monoclonal antibody, clone R06-6H7 (Cat # RAB01818).

- Immunohistochemistry (Formalin/PFA-fixed paraffin-embedded sections)

Immunohistochemical staining (Formalin/PFA-fixed paraffin-embedded sections) of human lung cancer with YAP1 recombinant monoclonal antibody, clone R06-6H7 (Cat # RAB01818). High-pressure and temperature Sodium Citrate pH 6.0 was used for antigen retrieval.

- Immunoprecipitation

Gene Info — YAP1

Entrez GeneID	10413
Protein Accession#	P46937
Gene Name	YAP1
Gene Alias	YAP, YAP2, YAP65, YKI
Gene Description	Yes-associated protein 1, 65kDa
Omim ID	606608
Gene Ontology	Hyperlink

Gene Summary

This gene encodes the human ortholog of chicken YAP protein which binds to the SH3 domain of the Yes proto-oncogene product. This protein contains a WW domain that is found in various structural, regulatory and signaling molecules in yeast, nematode, and mammals, and may be involved in protein-protein interaction. [provided by RefSeq]

Other Designations

yes-associated protein 2

Disease

- [Tobacco Use Disorder](#)