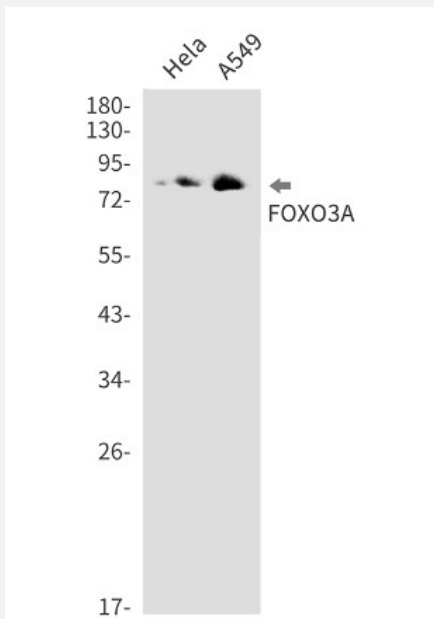


RecomAb™

FOXO3 recombinant monoclonal antibody, clone R03-2H2

Catalog # RAB01811 Size 100 uL

Applications



Western Blot

Western Blot analysis of HeLa, A549 lysates with FOXO3 recombinant monoclonal antibody, clone R03-2H2 (Cat # RAB01811).

Specification

Product Description	Rabbit recombinant monoclonal antibody raised against human FOXO3.
Antibody Species	Rabbit
Immunogen	Original antibody is raised against a synthetic peptide corresponding to human FOXO3.
Theoretical MW (kDa)	Calculated MW: 71 kD
Reactivity	Human
Form	Liquid
Purification	Affinity purification

Isotype	IgG
Recommend Usage	Western Blot (1:500-1:1000) The optimal working dilution should be determined by the end user.
Storage Buffer	In 50 mM Tris-Glycine, pH 7.4 (0.15 M NaCl, 40% Glycerol, 0.01% Sodium azide and 0.05% BSA)
Storage Instruction	Store at -20 °C. Aliquot to avoid repeated freezing and thawing.
Note	This product contains sodium azide: a POISONOUS AND HAZARDOUS SUBSTANCE which should be handled by trained staff only.

Applications

- Western Blot

Western Blot analysis of HeLa, A549 lysates with FOXO3 recombinant monoclonal antibody, clone R03-2H2 (Cat # RAB01811).

Gene Info — FOXO3

Entrez GeneID	2309
Protein Accession#	O43524
Gene Name	FOXO3
Gene Alias	AF6q21, DKFZp781A0677, FKHL1, FKHL1P2, FOXO2, FOXO3A, MGC12739, MGC31925
Gene Description	forkhead box O3
Omim ID	602681
Gene Ontology	Hyperlink
Gene Summary	This gene belongs to the forkhead family of transcription factors which are characterized by a distinct forkhead domain. This gene likely functions as a trigger for apoptosis through expression of genes necessary for cell death. Translocation of this gene with the MLL gene is associated with secondary acute leukemia. Alternatively spliced transcript variants encoding the same protein have been observed. [provided by RefSeq]
Other Designations	OTTHUMP00000016944 forkhead box O3A forkhead homolog (rhabdomyosarcoma) like 1 forkhead, Drosophila, homolog of, in rhabdomyosarcoma-like 1

Pathway

- [Chemokine signaling pathway](#)
- [Endometrial cancer](#)
- [Neurotrophin signaling pathway](#)
- [Non-small cell lung cancer](#)

Disease

- [Alzheimer disease](#)
- [Amenorrhea](#)
- [Cardiovascular Diseases](#)
- [Cleft Lip](#)
- [Cleft Palate](#)
- [Cognition](#)
- [Diabetes Mellitus](#)
- [Edema](#)
- [Genetic Predisposition to Disease](#)
- [Infertility](#)
- [Narcolepsy](#)
- [Obesity](#)
- [Ovarian Failure](#)
- [Primary Ovarian Insufficiency](#)
- [Tobacco Use Disorder](#)
- [Tooth Abnormalities](#)