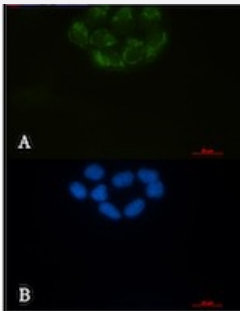


RecomAb™

# BSG recombinant monoclonal antibody, clone R04-5B3

Catalog # RAB01810      Size 100 uL

## Applications



### Immunocytochemistry

Immunocytochemical staining of HeLa with BSG recombinant monoclonal antibody, clone R04-5B3 (Cat # RAB01810). (A) BSG (green) and (B) DAPI (blue).

## Specification

Product Description	Rabbit recombinant monoclonal antibody raised against human BSG.
Antibody Species	Rabbit
Immunogen	Original antibody is raised against a synthetic peptide corresponding to human BSG.
Theoretical MW (kDa)	Calculated MW: 42 kD
Reactivity	Human
Form	Liquid
Purification	Affinity purification
Isotype	IgG
Recommend Usage	Immunocytochemistry Immunofluorescence (1:50-1:200) Immunohistochemistry (1:50-1/100) Western Blot (1:500-1:1000) The optimal working dilution should be determined by the end user.

Storage Buffer	In 50 mM Tris-Glycine, pH 7.4 (0.15 M NaCl, 40% Glycerol, 0.01% Sodium azide and 0.05% BSA)
Storage Instruction	Store at -20 °C. Aliquot to avoid repeated freezing and thawing.
Note	This product contains sodium azide: a POISONOUS AND HAZARDOUS SUBSTANCE which should be handled by trained staff only.

## Applications

- Western Blot
- Immunohistochemistry
- Immunocytochemistry

Immunocytochemical staining of HeLa with BSG recombinant monoclonal antibody, clone R04-5B3 (Cat # RAB01810).(A) BSG (green) and (B) DAPI (blue).

- Immunofluorescence

## Gene Info — BSG

Entrez GeneID	<a href="#">682</a>
Protein Accession#	<a href="#">P35613</a>
Gene Name	BSG
Gene Alias	5F7, CD147, EMMPRIN, M6, OK, TCSF
Gene Description	basigin (Ok blood group)
Omim ID	<a href="#">109480</a> <a href="#">111380</a>
Gene Ontology	<a href="#">Hyperlink</a>
Gene Summary	The protein encoded by this gene is a plasma membrane protein that is important in spermatogenesis, embryo implantation, neural network formation, and tumor progression. The encoded protein is also a member of the immunoglobulin superfamily. Multiple transcript variants encoding different isoforms have been found for this gene. [provided by RefSeq]
Other Designations	CD147 antigen M6 leukocyte activation antigen OK blood group antigen basigin collagenase stimulatory factor extracellular matrix metalloproteinase inducer

## Disease

- [Cardiovascular Diseases](#)
- [Diabetes Mellitus](#)
- [Edema](#)