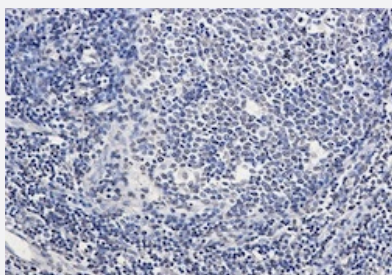


RecomAb™

SATB1 recombinant monoclonal antibody, clone R03-5H7

Catalog # RAB01808 Size 100 uL

Applications



Immunohistochemistry (Formalin/PFA-fixed paraffin-embedded sections)

Immunohistochemical staining (Formalin/PFA-fixed paraffin-embedded sections) of human tonsil with SATB1 recombinant monoclonal antibody, clone R03-5H7 (Cat # RAB01808). High-pressure and temperature Sodium Citrate pH 6.0 was used for antigen retrieval.

Specification

Product Description	Rabbit recombinant monoclonal antibody raised against human SATB1.
Antibody Species	Rabbit
Immunogen	Original antibody is raised against a synthetic peptide corresponding to human SATB1.
Theoretical MW (kDa)	Calculated MW: 86 kD
Reactivity	Human
Form	Liquid
Purification	Affinity purification
Isotype	IgG
Recommend Usage	Immunohistochemistry (1:50-1/100) Immunoprecipitation (1:20) Western Blot (1:500-1:1000) The optimal working dilution should be determined by the end user.
Storage Buffer	In 50 mM Tris-Glycine, pH 7.4 (0.15 M NaCl, 40% Glycerol, 0.01% Sodium azide and 0.05% BSA)

Storage Instruction

Store at -20 °C.
Aliquot to avoid repeated freezing and thawing.

Note

This product contains sodium azide: a POISONOUS AND HAZARDOUS SUBSTANCE which should be handled by trained staff only.

Applications

- Western Blot
- Immunohistochemistry (Formalin/PFA-fixed paraffin-embedded sections)

Immunohistochemical staining (Formalin/PFA-fixed paraffin-embedded sections) of human tonsil with SATB1 recombinant monoclonal antibody, clone R03-5H7 (Cat # RAB01808).High-pressure and temperature Sodium Citrate pH 6.0 was used for antigen retrieval.
- Immunoprecipitation

Gene Info — SATB1

Entrez GeneID	6304
Protein Accession#	Q01826
Gene Name	SATB1
Gene Alias	-
Gene Description	SATB homeobox 1
Omim ID	602075
Gene Ontology	Hyperlink
Other Designations	DNA-binding protein SATB1 special AT-rich sequence binding protein 1 special AT-rich sequence binding protein 1 (binds to nuclear matrix/scaffold-associating DNA's)

Disease

- [Tobacco Use Disorder](#)