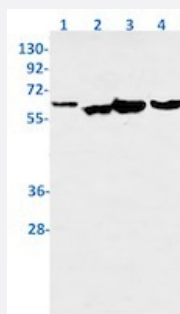


RecomAb™

PAK1 recombinant monoclonal antibody, clone R02-5G3

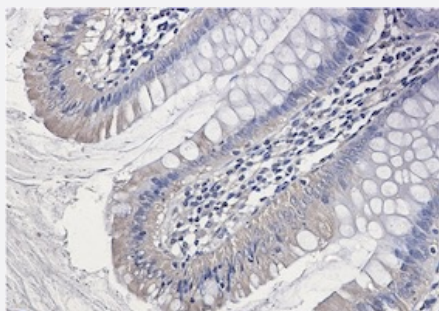
Catalog # RAB01807 Size 100 uL

Applications



Western Blot

Western blot analysis of Lane1: Hela, Lane2: CHO-K1, Lane3: C6 and Lane4: Jurkat lysates with PAK1 recombinant monoclonal antibody, clone R02-5G3 (Cat # RAB01807).



Immunohistochemistry (Formalin/PFA-fixed paraffin-embedded sections)

Immunohistochemical staining (Formalin/PFA-fixed paraffin-embedded sections) of human colon cancer with PAK1 recombinant monoclonal antibody, clone R02-5G3 (Cat # RAB01807).High-pressure and temperature Sodium Citrate pH 6.0 was used for antigen retrieval.

Specification

Product Description	Rabbit recombinant monoclonal antibody raised against human PAK1.
Antibody Species	Rabbit
Immunogen	Original antibody is raised against a synthetic peptide corresponding to human PAK1.
Theoretical MW (kDa)	Calculated MW: 61 kD
Reactivity	Hamster, Human, Mouse, Rat
Form	Liquid

Purification	Affinity purification
Isotype	IgG
Recommend Usage	Immunofluorescence (1:50-1:200) Immunohistochemistry (1:50-1/100) Immunoprecipitation (1:20) Western Blot (1:500-1:1000) The optimal working dilution should be determined by the end user.
Storage Buffer	In 50 mM Tris-Glycine, pH 7.4 (0.15 M NaCl, 40% Glycerol, 0.01% Sodium azide and 0.05% BSA)
Storage Instruction	Store at -20 °C. Aliquot to avoid repeated freezing and thawing.
Note	This product contains sodium azide: a POISONOUS AND HAZARDOUS SUBSTANCE which should be handled by trained staff only.

Applications

- Western Blot

Western blot analysis of Lane1: Hela, Lane2: CHO-K1, Lane3: C6 and Lane4: Jurkat lysates with PAK1 recombinant monoclonal antibody, clone R02-5G3 (Cat # RAB01807).

- Immunohistochemistry (Formalin/PFA-fixed paraffin-embedded sections)

Immunohistochemical staining (Formalin/PFA-fixed paraffin-embedded sections) of human colon cancer with PAK1 recombinant monoclonal antibody, clone R02-5G3 (Cat # RAB01807). High-pressure and temperature Sodium Citrate pH 6.0 was used for antigen retrieval.

- Immunohistochemistry (Frozen sections)

- Immunofluorescence

- Immunoprecipitation

Gene Info — PAK1

Entrez GeneID	5058
Protein Accession#	Q13153
Gene Name	PAK1
Gene Alias	MGC130000, MGC130001, PAKalpha

Gene Description	p21 protein (Cdc42/Rac)-activated kinase 1
Omim ID	602590
Gene Ontology	Hyperlink
Gene Summary	PAK proteins are critical effectors that link RhoGTPases to cytoskeleton reorganization and nuclear signaling. PAK proteins, a family of serine/threonine p21-activating kinases, include PAK1, PAK2, PAK3 and PAK4. These proteins serve as targets for the small GTP binding proteins Cdc42 and Rac and have been implicated in a wide range of biological activities. PAK1 regulates cell motility and morphology. Alternatively spliced transcript variants encoding different isoforms have been found for this gene. [provided by RefSeq]
Other Designations	STE20 homolog, yeast p21-activated kinase 1 p21/Cdc42/Rac1-activated kinase 1 (STE20 homolog, yeast) p21/Cdc42/Rac1-activated kinase 1 (yeast Ste20-related)

Pathway

- [Axon guidance](#)
- [Chemokine signaling pathway](#)
- [Epithelial cell signaling in Helicobacter pylori infection](#)
- [ErbB signaling pathway](#)
- [Fc gamma R-mediated phagocytosis](#)
- [Focal adhesion](#)
- [MAPK signaling pathway](#)
- [Natural killer cell mediated cytotoxicity](#)
- [Regulation of actin cytoskeleton](#)
- [Renal cell carcinoma](#)
- [T cell receptor signaling pathway](#)

Disease

- [Carcinoma](#)
- [Esophageal Neoplasms](#)
- [HIV Infections](#)

- [Tobacco Use Disorder](#)