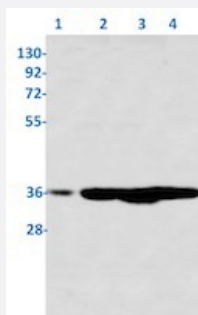


RecomAb™

CDK2 (phospho Thr14) recombinant monoclonal antibody, clone R06-4C1

Catalog # RAB01792 Size 100 uL

Applications



Western Blot

Western blot analysis of Lane1: Hela, Lane2: A549, Lane 3: HL-60 and Lane4: U2OS lysates with CDK2 (phospho Thr14) recombinant monoclonal antibody, clone R06-4C1 (Cat # RAB01792).

Specification

Product Description	Rabbit recombinant monoclonal antibody raised against human CDK2.
Antibody Species	Rabbit
Immunogen	Original antibody is raised against a synthetic phosphopeptide corresponding to residues surrounding Thr14 of human CDK2.
Theoretical MW (kDa)	Calculated MW: 34 kD
Reactivity	Human
Form	Liquid
Purification	Affinity purification
Isotype	IgG

Recommend Usage	Immunohistochemistry (1:50-1/100) Immunoprecipitation (1:20) Western Blot (1:500-1:1000) The optimal working dilution should be determined by the end user.
Storage Buffer	In 50 mM Tris-Glycine, pH 7.4 (0.15 M NaCl, 40% Glycerol, 0.01% Sodium azide and 0.05% BSA)
Storage Instruction	Store at -20 °C. Aliquot to avoid repeated freezing and thawing.
Note	This product contains sodium azide: a POISONOUS AND HAZARDOUS SUBSTANCE which should be handled by trained staff only.

Applications

- Western Blot

Western blot analysis of Lane1: Hela, Lane2: A549, Lane 3: HL-60 and Lane4: U2OS lysates with CDK2 (phospho Thr14) recombinant monoclonal antibody, clone R06-4C1 (Cat # RAB01792).

- Immunohistochemistry (Formalin/PFA-fixed paraffin-embedded sections)

- Immunoprecipitation

Gene Info — CDK2

Entrez GeneID	1017
Protein Accession#	P24941
Gene Name	CDK2
Gene Alias	p33(CDK2)
Gene Description	cyclin-dependent kinase 2
Omim ID	116953
Gene Ontology	Hyperlink

Gene Summary

The protein encoded by this gene is a member of the Ser/Thr protein kinase family. This protein kinase is highly similar to the gene products of *S. cerevisiae* cdc28, and *S. pombe* cdc2. It is a catalytic subunit of the cyclin-dependent protein kinase complex, whose activity is restricted to the G1-S phase, and essential for cell cycle G1/S phase transition. This protein associates with and regulated by the regulatory subunits of the complex including cyclin A or E, CDK inhibitor p21Cip1 (CDKN1A) and p27Kip1 (CDKN1B). Its activity is also regulated by its protein phosphorylation. Two alternatively spliced variants and multiple transcription initiation sites of this gene have been reported. [provided by RefSeq]

Other Designations

cdc2-related protein kinase|cell division kinase 2|p33 protein kinase

Pathway

- [Cell cycle](#)
- [p53 signaling pathway](#)
- [Pathways in cancer](#)
- [Prostate cancer](#)
- [Small cell lung cancer](#)

Disease

- [Azoospermia](#)
- [Breast cancer](#)
- [Breast Neoplasms](#)
- [Chromosome Aberrations](#)
- [Diabetes Mellitus](#)
- [Genetic Predisposition to Disease](#)
- [Kidney Failure](#)
- [Lymphoma](#)
- [Neoplasm Invasiveness](#)
- [Ovarian cancer](#)
- [Ovarian Neoplasms](#)