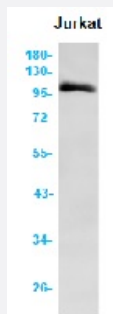


RecomAb™

MCM6 recombinant monoclonal antibody, clone R02-2I2

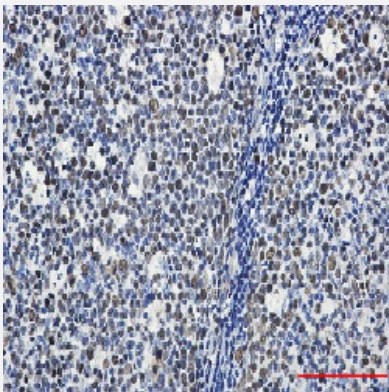
Catalog # RAB01746 Size 100 uL

Applications



Western Blot

Western blot analysis of MCM6 in Jurkat lysates using human MCM6 recombinant monoclonal antibody, clone R02-2I2 (Cat # RAB01746).



Immunohistochemistry (Formalin/PFA-fixed paraffin-embedded sections)

Immunohistochemistry (Formalin-fixed paraffin-embedded sections) of Human tonsil with MCM6 recombinant monoclonal antibody, clone R02-2I2 (Cat # RAB01746).

Specification

Product Description	Rabbit recombinant monoclonal antibody raised against human MCM6.
Antibody Species	Rabbit
Immunogen	Original antibody is raised against recombinant protein corresponding to human MCM6
Theoretical MW (kDa)	Calculated MW: 93 kD
Reactivity	Human

Form	Liquid
Purification	Affinity purification
Isotype	IgG
Recommend Usage	Immunofluorescence (1:50-1:200) Immunohistochemistry (1:50-1:100) Immunoprecipitation (1:20) Western Blot (1:500-1:1000) The optimal working dilution should be determined by the end user.
Storage Buffer	In 50 mM Tris-Glycine, pH 7.4 (0.15 M NaCl, 40% Glycerol, 0.01% Sodium azide and 0.05% BSA)
Storage Instruction	Store at 4°C for short term. For long term storage store at -20°C. Aliquot to avoid repeated freezing and thawing.
Note	This product contains sodium azide: a POISONOUS AND HAZARDOUS SUBSTANCE which should be handled by trained staff only.

Applications

- Western Blot

Western blot analysis of MCM6 in Jurkat lysates using human MCM6 recombinant monoclonal antibody, clone R02-2I2 (Cat # RAB01746).

- Immunohistochemistry (Formalin/PFA-fixed paraffin-embedded sections)

Immunohistochemistry (Formalin-fixed paraffin-embedded sections) of Human tonsil with MCM6 recombinant monoclonal antibody, clone R02-2I2 (Cat # RAB01746).

- Immunohistochemistry (Frozen sections)

- Immunocytochemistry

- Immunoprecipitation

Gene Info — MCM6

Entrez GeneID	4175
Protein Accession#	Q14566
Gene Name	MCM6

Gene Alias	MCG40308, Mis5, P105MCM
Gene Description	minichromosome maintenance complex component 6
Omim ID	223100 601806
Gene Ontology	Hyperlink
Gene Summary	<p>The protein encoded by this gene is one of the highly conserved mini-chromosome maintenance proteins (MCM) that are essential for the initiation of eukaryotic genome replication. The hexameric protein complex formed by the MCM proteins is a key component of the pre-replication complex (pre_RC) and may be involved in the formation of replication forks and in the recruitment of other DNA replication related proteins. The MCM complex consisting of this protein and MCM2, 4 and 7 proteins possesses DNA helicase activity, and may act as a DNA unwinding enzyme. The phosphorylation of the complex by CDC2 kinase reduces the helicase activity, suggesting a role in the regulation of DNA replication. [provided by RefSeq]</p>
Other Designations	DNA replication licensing factor MCM6 MCM6 minichromosome maintenance deficient 6 (MIS5 homolog, S. pombe) MIS5 homolog minichromosome maintenance deficient (mis5, S. pombe) 6 minichromosome maintenance deficient 6 homolog

Pathway

- [Cell cycle](#)
- [DNA replication](#)

Disease

- [Carcinoma](#)
- [Genetic Predisposition to Disease](#)
- [Kidney Neoplasms](#)
- [Lactose Intolerance](#)
- [Ovarian Neoplasms](#)