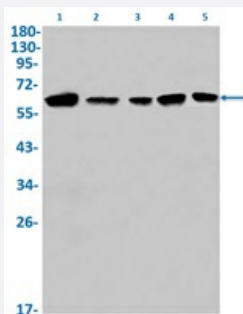


RecomAb™

STK4 recombinant monoclonal antibody, clone R09-3C1

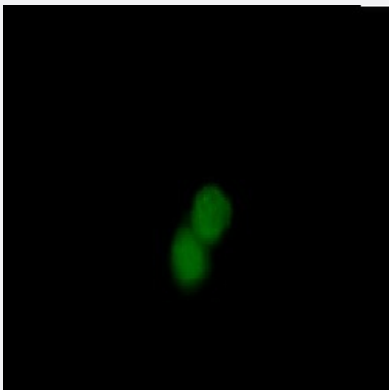
Catalog # RAB01730 Size 100 uL

Applications



Western Blot

Western blot analysis of MSP/MST1 in K562, rat Brain, C6, 3T3, HeLa lysates using human MSP/MST1 recombinant monoclonal antibody, clone R09-3C1 (Cat # RAB01730).



Immunocytochemistry

Immunocytochemistry analysis of MSP (green) in K562 using human MSP recombinant monoclonal antibody, clone R09-3C1 (Cat # RAB01730), and DAPI(blue).

Specification

Product Description	Rabbit recombinant monoclonal antibody raised against synthetic peptide of human Serine/threonine-protein kinase 4.
Antibody Species	Rabbit
Immunogen	Original antibody is raised against a synthetic peptide corresponding to human Serine/threonine-protein kinase 4
Theoretical MW (kDa)	Calculated MW: 56 kD

Reactivity	Human
Form	Liquid
Purification	Affinity purification
Isotype	IgG
Recommend Usage	Immunofluorescence (1:50-1:200) Immunoprecipitation (1:20) Western Blot (1:500-1:1000) The optimal working dilution should be determined by the end user.
Storage Buffer	In 50 mM Tris-Glycine, pH 7.4 (0.15 M NaCl, 40% Glycerol, 0.01% Sodium azide and 0.05% BSA)
Storage Instruction	Store at 4°C for short term. For long term storage store at -20°C. Aliquot to avoid repeated freezing and thawing.
Note	This product contains sodium azide: a POISONOUS AND HAZARDOUS SUBSTANCE which should be handled by trained staff only.

Applications

- Western Blot

Western blot analysis of MSP/MST1 in K562, rat Brain, C6, 3T3, Hela lysates using human MSP/MST1 recombinant monoclonal antibody, clone R09-3C1 (Cat # RAB01730).

- Immunocytochemistry

Immunocytochemistry analysis of MSP (green) in K562 using human MSP recombinant monoclonal antibody, clone R09-3C1 (Cat # RAB01730), and DAPI(blue).

- Immunoprecipitation

Gene Info — STK4

Entrez GeneID	6789
Protein Accession#	Q13043
Gene Name	STK4
Gene Alias	DKFZp686A2068, KRS2, MST1, YSK3
Gene Description	serine/threonine kinase 4

Omim ID [604965](#)

Gene Ontology [Hyperlink](#)

Gene Summary

The protein encoded by this gene is a cytoplasmic kinase that is structurally similar to the yeast Ste20p kinase, which acts upstream of the stress-induced mitogen-activated protein kinase cascade. The encoded protein can phosphorylate myelin basic protein and undergoes autophosphorylation. A caspase-cleaved fragment of the encoded protein has been shown to be capable of phosphorylating histone H2B. The particular phosphorylation catalyzed by this protein has been correlated with apoptosis, and it's possible that this protein induces the chromatin condensation observed in this process. [provided by RefSeq]

Other Designations

OTTHUMP00000043418|dJ211D12.2 (serine/threonine kinase 4 (MST1, KRS2))|kinase responsive to stress 2|mammalian sterile 20-like 1|yeast Ste20-like

Pathway

- [MAPK signaling pathway](#)
- [Non-small cell lung cancer](#)
- [Pathways in cancer](#)

Disease

- [Kidney Failure](#)
- [Tobacco Use Disorder](#)