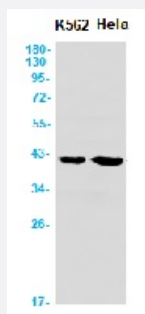


RecomAb™

P2RY6 recombinant monoclonal antibody, clone R06-4D8

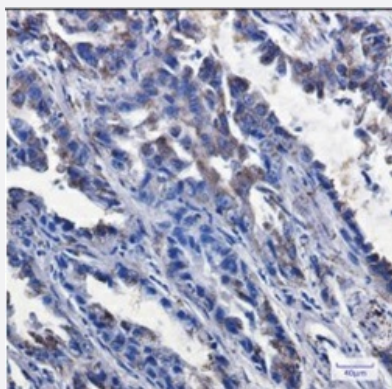
Catalog # RAB01722 Size 100 uL

Applications



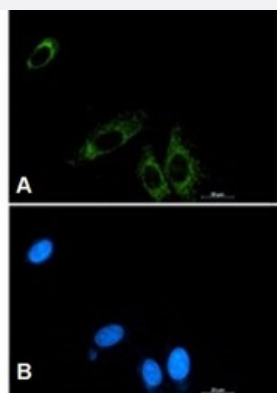
Western Blot

Western blot analysis of P2Y6 in K562, HeLa lysates using human P2Y6 recombinant monoclonal antibody, clone R06-4D8 (Cat # RAB01722).



Immunohistochemistry (Formalin/PFA-fixed paraffin-embedded sections)

Immunohistochemical staining (Formalin-fixed paraffin-embedded sections) of human lung cancer with P2Y6 recombinant monoclonal antibody, clone R06-4D8 (Cat # RAB01722). High-pressure and temperature Sodium Citrate pH 6.0 was used for antigen retrieval.



Immunocytochemistry

Immunocytochemical staining of A549 with P2Y6 recombinant monoclonal antibody, clone R06-4D8 (Cat # RAB01722). (A) P2Y6 (green) and (B) DAPI (blue).

Specification

Product Description	Rabbit recombinant monoclonal antibody raised against synthetic peptide of human P2Y6.
Antibody Species	Rabbit
Immunogen	Original antibody is raised against a synthetic peptide corresponding to human P2Y6
Theoretical MW (kDa)	Calculated MW: 36 kD
Reactivity	Human
Form	Liquid
Purification	Affinity purification
Isotype	IgG
Recommend Usage	Immunofluorescence (1:50-1:200) Immunohistochemistry (1:50-1:100) Immunoprecipitation (1:20) Western Blot (1:500-1:1000) The optimal working dilution should be determined by the end user.
Storage Buffer	In 50 mM Tris-Glycine, pH 7.4 (0.15 M NaCl, 40% Glycerol, 0.01% Sodium azide and 0.05% BSA)
Storage Instruction	Store at 4°C for short term. For long term storage store at -20°C. Aliquot to avoid repeated freezing and thawing.
Note	This product contains sodium azide: a POISONOUS AND HAZARDOUS SUBSTANCE which should be handled by trained staff only.

Applications

- Western Blot

Western blot analysis of P2Y6 in K562, Hela lysates using human P2Y6 recombinant monoclonal antibody, clone R06-4D8 (Cat # RAB01722).

- Immunohistochemistry (Formalin/PFA-fixed paraffin-embedded sections)

Immunohistochemical staining (Formalin-fixed paraffin-embedded sections) of human lung cancer with P2Y6 recombinant monoclonal antibody, clone R06-4D8 (Cat # RAB01722). High-pressure and temperature Sodium Citrate pH 6.0 was used for antigen retrieval.

- Immunohistochemistry (Frozen sections)

- Immunocytochemistry

Immunocytochemical staining of A549 with P2Y6 recombinant monoclonal antibody, clone R06-4D8 (Cat # RAB01722). (A) P2Y6 (green) and (B) DAPI (blue).

- Immunoprecipitation

Gene Info — P2RY6

Entrez GeneID [5031](#)

Protein Accession# [Q15077](#)

Gene Name P2RY6

Gene Alias MGC15335, P2Y6

Gene Description pyrimidinergic receptor P2Y, G-protein coupled, 6

Omim ID [602451](#)

Gene Ontology [Hyperlink](#)

Gene Summary The product of this gene belongs to the family of G-protein coupled receptors. This family has several receptor subtypes with different pharmacological selectivity, which overlaps in some cases, for various adenosine and uridine nucleotides. This receptor is responsive to UDP, partially responsive to UTP and ADP, and not responsive to ATP. Four transcript variants encoding the same isoform have been identified for this gene. [provided by RefSeq]

Other Designations G-coupled nucleotide receptor|P2 purinoceptor|P2Y purinoceptor 6|P2Y6 receptor|pyrimidinergic receptor P2Y6

Pathway

- [Neuroactive ligand-receptor interaction](#)

Disease

- [Tobacco Use Disorder](#)