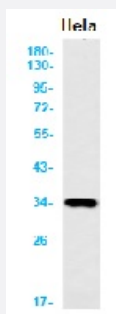


RecomAb™

TREX1 recombinant monoclonal antibody, clone R05-1D6

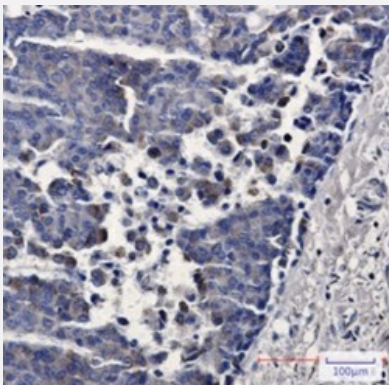
Catalog # RAB01714 Size 100 uL

Applications



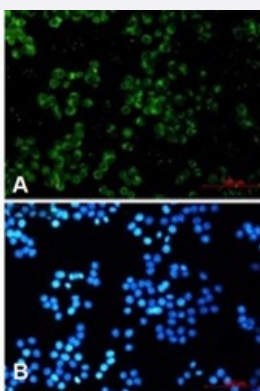
Western Blot

Western blot analysis of TREX1 in HeLa lysates using human TREX1 recombinant monoclonal antibody, clone R05-1D6 (Cat # RAB01714).



Immunohistochemistry (Formalin/PFA-fixed paraffin-embedded sections)

Immunohistochemical staining (Formalin-fixed paraffin-embedded sections) of human breast cancer with TREX1 recombinant monoclonal antibody, clone R05-1D6 (Cat # RAB01714). High-pressure and temperature Sodium Citrate pH 6.0 was used for antigen retrieval.



Immunocytochemistry

Immunocytochemistry analysis of TREX1 (green) in HeLa using human TREX1 recombinant monoclonal antibody, clone R05-1D6 (Cat # RAB01714), and DAPI(blue).

Specification

Product Description	Rabbit recombinant monoclonal antibody raised against human TREX1.
Antibody Species	Rabbit
Immunogen	Original antibody is raised against recombinant protein corresponding to human TREX1
Theoretical MW (kDa)	Calculated MW: 33 kD
Reactivity	Human
Form	Liquid
Purification	Affinity purification
Isotype	IgG
Recommend Usage	Immunofluorescence (1:50-1:200) Immunohistochemistry (1:50-1:100) Western Blot (1:500-1:1000) The optimal working dilution should be determined by the end user.
Storage Buffer	In 50 mM Tris-Glycine, pH 7.4 (0.15 M NaCl, 40% Glycerol, 0.01% Sodium azide and 0.05% BSA)
Storage Instruction	Store at 4°C for short term. For long term storage store at -20°C. Aliquot to avoid repeated freezing and thawing.
Note	This product contains sodium azide: a POISONOUS AND HAZARDOUS SUBSTANCE which should be handled by trained staff only.

Applications

- Western Blot

Western blot analysis of TREX1 in Hela lysates using human TREX1 recombinant monoclonal antibody, clone R05-1D6 (Cat # RAB01714).

- Immunohistochemistry (Formalin/PFA-fixed paraffin-embedded sections)

Immunohistochemical staining (Formalin-fixed paraffin-embedded sections) of human breast cancer with TREX1 recombinant monoclonal antibody, clone R05-1D6 (Cat # RAB01714). High-pressure and temperature Sodium Citrate pH 6.0 was used for antigen retrieval.

- Immunohistochemistry (Frozen sections)

- Immunocytochemistry

Immunocytochemistry analysis of TREX1 (green) in Hela using human TREX1 recombinant monoclonal antibody, clone R05-1D6 (Cat # RAB01714), and DAPI(blue).

Gene Info — TREX1

Entrez GeneID [11277](#)

Protein Accession# [Q9NSU2](#)

Gene Name TREX1

Gene Alias AGS1, AGS5, CRV, DKFZp434J0310, DRN3, HERNS

Gene Description three prime repair exonuclease 1

Omim ID [192315](#) [225750](#) [606609](#) [610448](#) [610905](#)

Gene Ontology [Hyperlink](#)

Gene Summary This gene encodes the major 3'->5' DNA exonuclease in human cells. The protein is a non-processive exonuclease that may serve a proofreading function for a human DNA polymerase. It is also a component of the SET complex, and acts to rapidly degrade 3' ends of nicked DNA during granzyme A-mediated cell death. Mutations in this gene result in Aicardi-Goutieres syndrome, chilblain lupus, and Cree encephalitis. Multiple transcript variants encoding different isoforms have been found for this gene. [provided by RefSeq]

Other Designations 3' repair exonuclease 1|OTTHUMP00000164813|deoxyribonuclease III, dnaQ/mutD-like

Disease

- [Adenocarcinoma](#)
- [Genetic Predisposition to Disease](#)
- [Lupus Erythematosus](#)
- [Myositis](#)
- [Pancreatic cancer](#)
- [Pancreatic Neoplasms](#)