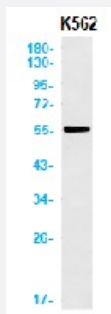


RecomAb™

MAGEC2 recombinant monoclonal antibody, clone R04-1B9

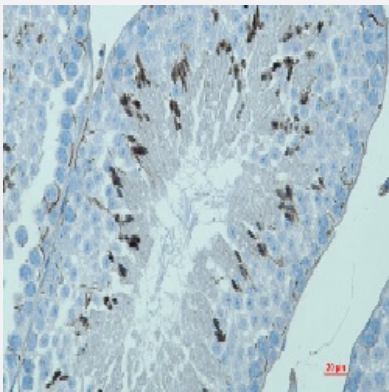
Catalog # RAB01705 Size 100 uL

Applications



Western Blot

Western blot analysis of MAGEE1 in K562 lysates using human MAGEE1 recombinant monoclonal antibody, clone R04-1B9 (Cat # RAB01705).



Immunohistochemistry (Formalin/PFA-fixed paraffin-embedded sections)

Immunohistochemistry (Formalin-fixed paraffin-embedded sections) of mouse testis with MAGEC2 recombinant monoclonal antibody, clone R04-1B9 (Cat # RAB01705).

Specification

Product Description	Rabbit recombinant monoclonal antibody raised against human MAGEE1.
Antibody Species	Rabbit
Immunogen	Original antibody is raised against recombinant protein corresponding to human MAGEE1
Theoretical MW (kDa)	Calculated MW: 41 kD
Reactivity	Human

Form	Liquid
Purification	Affinity purification
Isotype	IgG
Recommend Usage	Immunohistochemistry (1:50-1:100) Immunoprecipitation (1:20) Western Blot (1:500-1:1,000) The optimal working dilution should be determined by the end user.
Storage Buffer	In 50 mM Tris-Glycine, pH 7.4 (0.15 M NaCl, 40% Glycerol, 0.01% Sodium azide and 0.05% BSA)
Storage Instruction	Store at 4°C for short term. For long term storage store at -20°C. Aliquot to avoid repeated freezing and thawing.
Note	This product contains sodium azide: a POISONOUS AND HAZARDOUS SUBSTANCE which should be handled by trained staff only.

Applications

- Western Blot

Western blot analysis of MAGEE1 in K562 lysates using human MAGEE1 recombinant monoclonal antibody, clone R04-1B9 (Cat # RAB01705).

- Immunohistochemistry (Formalin/PFA-fixed paraffin-embedded sections)

Immunohistochemistry (Formalin-fixed paraffin-embedded sections) of mouse testis with MAGEC2 recombinant monoclonal antibody, clone R04-1B9 (Cat # RAB01705).

- Immunoprecipitation

Gene Info — MAGEC2

Entrez GeneID	51438
Protein Accession#	Q9UBF1
Gene Name	MAGEC2
Gene Alias	CT10, HCA587, MAGEE1, MGC13377
Gene Description	melanoma antigen family C, 2
Omim ID	300468

Gene Ontology[Hyperlink](#)**Gene Summary**

This gene is related to members of the MAGEC gene family. It is not expressed in normal tissues, except for testis, and is expressed in tumors of various histological types. This gene and the MAGEC genes are clustered on chromosome Xq26-q27. [provided by RefSeq]

Other Designations

MAGE-C2 antigen|OTTHUMP00000024186|cancer-testis antigen CT10|hepatocellular cancer antigen 587|melanoma antigen, family E, 1 protein|melanoma antigen, family E, 1, cancer/testis specific|melanoma-associated antigen E1