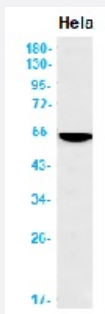


RecomAb™

KRT16 recombinant monoclonal antibody, clone R02-5F8

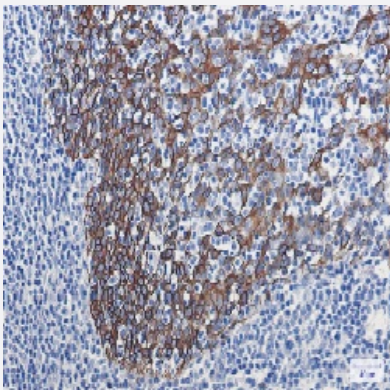
Catalog # RAB01704 Size 100 uL

Applications



Western Blot

Western blot analysis of Cytokeratin 16 in HeLa lysates using human Cytokeratin 16 recombinant monoclonal antibody, clone R02-5F8 (Cat # RAB01704).



Immunohistochemistry (Formalin/PFA-fixed paraffin-embedded sections)

Immunohistochemistry (Formalin-fixed paraffin-embedded sections) of Human tonsil with Cytokeratin 16 recombinant monoclonal antibody, clone R02-5F8 (Cat # RAB01704).

Specification

Product Description	Rabbit recombinant monoclonal antibody raised against human Cytokeratin 16.
Antibody Species	Rabbit
Immunogen	Original antibody is raised against recombinant protein corresponding to human Cytokeratin 16
Theoretical MW (kDa)	Calculated MW: 51 kD
Reactivity	Human

Form	Liquid
Purification	Affinity purification
Isotype	IgG
Recommend Usage	Immunohistochemistry (1:50-1:100) Western Blot (1:500-1:1,000) The optimal working dilution should be determined by the end user.
Storage Buffer	In 50 mM Tris-Glycine, pH 7.4 (0.15 M NaCl, 40% Glycerol, 0.01% Sodium azide and 0.05% BSA)
Storage Instruction	Store at 4°C for short term. For long term storage store at -20°C. Aliquot to avoid repeated freezing and thawing.
Note	This product contains sodium azide: a POISONOUS AND HAZARDOUS SUBSTANCE which should be handled by trained staff only.

Applications

- Western Blot

Western blot analysis of Cytokeratin 16 in Hela lysates using human Cytokeratin 16 recombinant monoclonal antibody, clone R02-5F8 (Cat # RAB01704).

- Immunohistochemistry (Formalin/PFA-fixed paraffin-embedded sections)

Immunohistochemistry (Formalin-fixed paraffin-embedded sections) of Human tonsil with Cytokeratin 16 recombinant monoclonal antibody, clone R02-5F8 (Cat # RAB01704).

Gene Info — KRT16

Entrez GeneID	3868
Protein Accession#	P08779
Gene Name	KRT16
Gene Alias	CK16, K16, K1CP, KRT16A, NEPPK
Gene Description	keratin 16
Omim ID	144200 148067 167200 600962
Gene Ontology	Hyperlink

Gene Summary

The protein encoded by this gene is a member of the keratin gene family. The keratins are intermediate filament proteins responsible for the structural integrity of epithelial cells and are subdivided into cytokeratins and hair keratins. Most of the type I cytokeratins consist of acidic proteins which are arranged in pairs of heterotypic keratin chains and are clustered in a region of chromosome 17q12-q21. This keratin has been coexpressed with keratin 14 in a number of epithelial tissues, including esophagus, tongue, and hair follicles. Mutations in this gene are associated with type 1 pachyonychia congenita, non-epidermolytic palmoplantar keratoderma and unilateral palmoplantar verrucous nevus. [provided by RefSeq]

Other Designations

cytokeratin 16|focal non-epidermolytic palmoplantar keratoderma|keratin, type I cytoskeletal 16