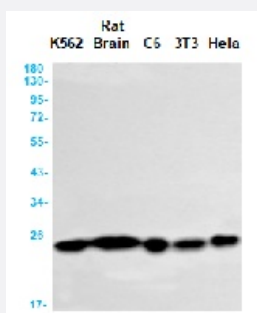


RecomAb™

PARK7 recombinant monoclonal antibody, clone R04-6H5

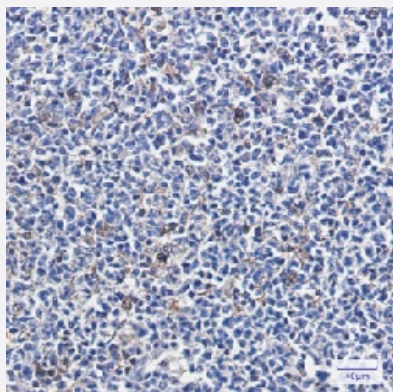
Catalog # RAB01692 Size 100 uL

Applications



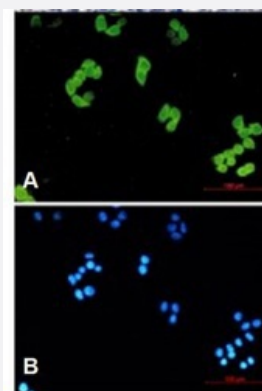
Western Blot

Western blot analysis of PARK7/DJ1 in K562, rat Brain, C6, 3T3, HeLa lysates using human PARK7/DJ1 recombinant monoclonal antibody, clone R04-6H5 (Cat # RAB01692).



Immunohistochemistry (Formalin/PFA-fixed paraffin-embedded sections)

Immunohistochemistry (Formalin-fixed paraffin-embedded sections) of Human tonsil with PARK7/DJ1 recombinant monoclonal antibody, clone R04-6H5 (Cat # RAB01692).



Immunocytochemistry

Immunocytochemical staining of HeLa with PARK7/DJ1 recombinant monoclonal antibody, clone R04-6H5 (Cat # RAB01692). (A) PARK7/DJ1 (green) and (B) DAPI (blue).

Specification

Product Description	Rabbit recombinant monoclonal antibody raised against synthetic peptide of human PARK7/DJ1.
Antibody Species	Rabbit
Immunogen	Original antibody is raised against a synthetic peptide corresponding to human PARK7/DJ1
Theoretical MW (kDa)	Calculated MW: 20 kD
Reactivity	Human
Form	Liquid
Purification	Affinity purification
Isotype	IgG
Recommend Usage	Immunofluorescence (1:50-1:200) Immunohistochemistry (1:50-1:100) Immunoprecipitation (1:20) Western Blot (1:500-1:1000) The optimal working dilution should be determined by the end user.
Storage Buffer	In 50 mM Tris-Glycine, pH 7.4 (0.15 M NaCl, 40% Glycerol, 0.01% Sodium azide and 0.05% BSA)
Storage Instruction	Store at 4°C for short term. For long term storage store at -20°C. Aliquot to avoid repeated freezing and thawing.
Note	This product contains sodium azide: a POISONOUS AND HAZARDOUS SUBSTANCE which should be handled by trained staff only.

Applications

- Western Blot

Western blot analysis of PARK7/DJ1 in K562, rat Brain, C6, 3T3, Hela lysates using human PARK7/DJ1 recombinant monoclonal antibody, clone R04-6H5 (Cat # RAB01692).

- Immunohistochemistry (Formalin/PFA-fixed paraffin-embedded sections)

Immunohistochemistry (Formalin-fixed paraffin-embedded sections) of Human tonsil with PARK7/DJ1 recombinant monoclonal antibody, clone R04-6H5 (Cat # RAB01692).

- Immunohistochemistry (Frozen sections)

- Immunocytochemistry

Immunocytochemical staining of Hela with PARK7/DJ1 recombinant monoclonal antibody, clone R04-6H5 (Cat # RAB01692). (A) PARK7/DJ1 (green) and (B) DAPI (blue).

- Immunoprecipitation

Gene Info — PARK7

Entrez GeneID [11315](#)

Protein Accession# [Q99497](#)

Gene Name PARK7

Gene Alias DJ-1, DJ1, FLJ27376, FLJ34360, FLJ92274

Gene Description Parkinson disease (autosomal recessive, early onset) 7

Omim ID [602533](#) [606324](#)

Gene Ontology [Hyperlink](#)

Gene Summary The product of this gene belongs to the peptidase C56 family of proteins. It acts as a positive regulator of androgen receptor-dependent transcription. It may also function as a redox-sensitive chaperone, as a sensor for oxidative stress, and it apparently protects neurons against oxidative stress and cell death. Defects in this gene are the cause of autosomal recessive early-onset Parkinson disease 7. Two transcript variants encoding the same protein have been identified for this gene. [provided by RefSeq]

Other Designations OTTHUMP00000001348|OTTHUMP00000001349|OTTHUMP00000001350|OTTHUMP00000001351|Parkinson disease protein 7|oncogene DJ1|protein DJ-1

Disease

- [Alzheimer disease](#)
- [Chromosome Disorders](#)
- [Dementia](#)
- [Disease Progression](#)
- [Genetic Predisposition to Disease](#)
- [Lewy Body Disease](#)

- [Parkinson disease](#)
- [Parkinsonian Disorders](#)