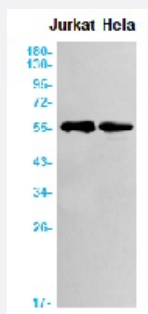


RecomAb™

GPC1 recombinant monoclonal antibody, clone R03-2E8

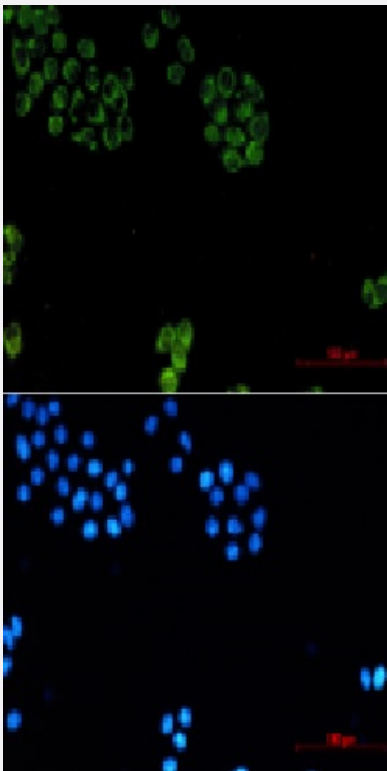
Catalog # RAB01691 Size 100 uL

Applications



Western Blot

Western blot analysis of Glypican 1/GPC1 in Jurkat, HeLa lysates using human Glypican 1/GPC1 recombinant monoclonal antibody, clone R03-2E8 (Cat # RAB01691).



Immunocytochemistry

Immunocytochemistry analysis of Glypican 1/GPC1 (green) in HeLa using human Glypican 1/GPC1 recombinant monoclonal antibody, clone R03-2E8 (Cat # RAB01691), and DAPI(blue).

Specification

Product Description	Rabbit recombinant monoclonal antibody raised against synthetic peptide of human Glypican 1/GPC1.
Antibody Species	Rabbit
Immunogen	Original antibody is raised against a synthetic peptide corresponding to human Glypican 1/GPC1
Theoretical MW (kDa)	Calculated MW: 62 kD
Reactivity	Human
Form	Liquid
Purification	Affinity purification
Isotype	IgG
Recommend Usage	Immunofluorescence (1:50-1:200) Western Blot (1:500-1:1000) The optimal working dilution should be determined by the end user.
Storage Buffer	In 50 mM Tris-Glycine, pH 7.4 (0.15 M NaCl, 40% Glycerol, 0.01% Sodium azide and 0.05% BSA)
Storage Instruction	Store at 4°C for short term. For long term storage store at -20°C. Aliquot to avoid repeated freezing and thawing.
Note	This product contains sodium azide: a POISONOUS AND HAZARDOUS SUBSTANCE which should be handled by trained staff only.

Applications

- Western Blot

Western blot analysis of Glypican 1/GPC1 in Jurkat, Hela lysates using human Glypican 1/GPC1 recombinant monoclonal antibody, clone R03-2E8 (Cat # RAB01691).

- Immunocytochemistry

Immunocytochemistry analysis of Glypican 1/GPC1 (green) in Hela using human Glypican 1/GPC1 recombinant monoclonal antibody, clone R03-2E8 (Cat # RAB01691), and DAPI(blue).

Gene Info — GPC1

Entrez GeneID	2817
Protein Accession#	P35052
Gene Name	GPC1

Gene Alias	FLJ38078, glypican
Gene Description	glypican 1
Omim ID	600395
Gene Ontology	Hyperlink
Gene Summary	Cell surface heparan sulfate proteoglycans are composed of a membrane-associated protein core substituted with a variable number of heparan sulfate chains. Members of the glypican-related integral membrane proteoglycan family (GRIPS) contain a core protein anchored to the cytoplasmic membrane via a glycosyl phosphatidylinositol linkage. These proteins may play a role in the control of cell division and growth regulation. [provided by RefSeq]
Other Designations	glypican proteoglycan 1

Disease

- [Breast cancer](#)
- [Breast Neoplasms](#)
- [Genetic Predisposition to Disease](#)
- [Schizophrenia](#)