

RecomAb™

MCAM recombinant monoclonal antibody, clone R05-5A2

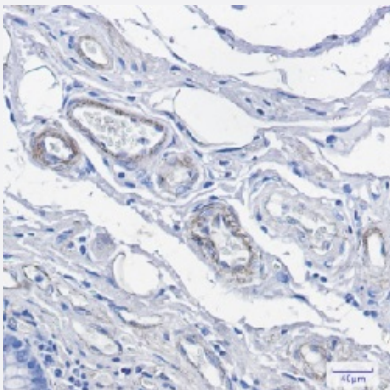
Catalog # RAB01687 Size 100 uL

Applications



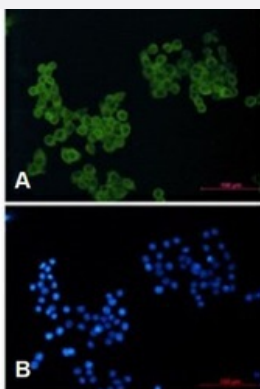
Western Blot

Western blot analysis of CD146 in C6, HeLa lysates using human CD146 recombinant monoclonal antibody, clone R05-5A2 (Cat # RAB01687).



Immunohistochemistry (Formalin/PFA-fixed paraffin-embedded sections)

Immunohistochemistry (Formalin-fixed paraffin-embedded sections) of Human colon cancer with CD146 recombinant monoclonal antibody, clone R05-5A2 (Cat # RAB01687).



Immunocytochemistry

Immunocytochemical staining of HeLa with CD146 recombinant monoclonal antibody, clone R05-5A2 (Cat # RAB01687). (A) CD146 (green) and (B) DAPI (blue).

Specification

Product Description	Rabbit recombinant monoclonal antibody raised against synthetic peptide of human CD146.
Antibody Species	Rabbit
Immunogen	Original antibody is raised against a synthetic peptide corresponding to human CD146
Theoretical MW (kDa)	Calculated MW: 72 kD
Reactivity	Human
Form	Liquid
Purification	Affinity purification
Isotype	IgG
Recommend Usage	Immunofluorescence (1:50-1:200) Immunohistochemistry (1:50-1:100) Western Blot (1:500-1:1000) The optimal working dilution should be determined by the end user.
Storage Buffer	In 50 mM Tris-Glycine, pH 7.4 (0.15 M NaCl, 40% Glycerol, 0.01% Sodium azide and 0.05% BSA)
Storage Instruction	Store at 4°C for short term. For long term storage store at -20°C. Aliquot to avoid repeated freezing and thawing.
Note	This product contains sodium azide: a POISONOUS AND HAZARDOUS SUBSTANCE which should be handled by trained staff only.

Applications

- Western Blot

Western blot analysis of CD146 in C6, Hela lysates using human CD146 recombinant monoclonal antibody, clone R05-5A2 (Cat # RAB01687).

- Immunohistochemistry (Formalin/PFA-fixed paraffin-embedded sections)

Immunohistochemistry (Formalin-fixed paraffin-embedded sections) of Human colon cancer with CD146 recombinant monoclonal antibody, clone R05-5A2 (Cat # RAB01687).

- Immunohistochemistry (Frozen sections)

- Immunocytochemistry

Immunocytochemical staining of Hela with CD146 recombinant monoclonal antibody, clone R05-5A2 (Cat # RAB01687). (A) CD146 (green) and (B) DAPI (blue).

Gene Info — MCAM

Entrez GeneID	4162
Protein Accession#	P43121
Gene Name	MCAM
Gene Alias	CD146, MUC18
Gene Description	melanoma cell adhesion molecule
Omim ID	155735
Gene Ontology	Hyperlink
Other Designations	Gicerin melanoma adhesion molecule