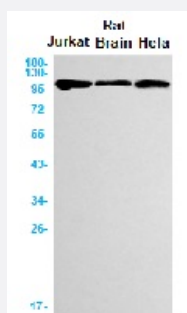


RecomAb™

# USP11 recombinant monoclonal antibody, clone R08-2D7

Catalog # RAB01679      Size 100 uL

## Applications



### Western Blot

Western blot analysis of USP11 in Jurkat, rat Brain, Hela lysates using human USP11 recombinant monoclonal antibody, clone R08-2D7 (Cat # RAB01679).

## Specification

<b>Product Description</b>	Rabbit recombinant monoclonal antibody raised against synthetic peptide of human USP11.
<b>Antibody Species</b>	Rabbit
<b>Immunogen</b>	Original antibody is raised against a synthetic peptide corresponding to human USP11
<b>Theoretical MW (kDa)</b>	Calculated MW: 110 k
<b>Reactivity</b>	Human
<b>Form</b>	Liquid
<b>Purification</b>	Affinity purification
<b>Isotype</b>	IgG
<b>Recommend Usage</b>	Immunoprecipitation (1:20) Western Blot (1:500-1:1,000) The optimal working dilution should be determined by the end user.
<b>Storage Buffer</b>	In 50 mM Tris-Glycine, pH 7.4 (0.15 M NaCl, 40% Glycerol, 0.01% Sodium azide and 0.05% BSA)

**Storage Instruction**

Store at 4°C for short term. For long term storage store at -20°C.  
Aliquot to avoid repeated freezing and thawing.

**Note**

This product contains sodium azide: a POISONOUS AND HAZARDOUS SUBSTANCE which should be handled by trained staff only.

## Applications

- Western Blot

Western blot analysis of USP11 in Jurkat, rat Brain, Hela lysates using human USP11 recombinant monoclonal antibody, clone R08-2D7 (Cat # RAB01679).

- Immunoprecipitation

## Gene Info — USP11

**Entrez GeneID**[8237](#)**Protein Accession#**[P51784](#)**Gene Name**

USP11

**Gene Alias**

UHX1

**Gene Description**

ubiquitin specific peptidase 11

**Omim ID**[300050](#)**Gene Ontology**[Hyperlink](#)**Gene Summary**

Protein ubiquitination controls many intracellular processes, including cell cycle progression, transcriptional activation, and signal transduction. This dynamic process, involving ubiquitin conjugating enzymes and deubiquitinating enzymes, adds and removes ubiquitin. Deubiquitinating enzymes are cysteine proteases that specifically cleave ubiquitin from ubiquitin-conjugated protein substrates. This gene encodes a deubiquitinating enzyme which lies in a gene cluster on chromosome Xp11.23 [provided by RefSeq]

**Other Designations**

deubiquitinating enzyme 11|ubiquitin carboxyl-terminal hydrolase, X-linked|ubiquitin specific protease 11|ubiquitin thiolesterase 11|ubiquitin-specific processing protease 11