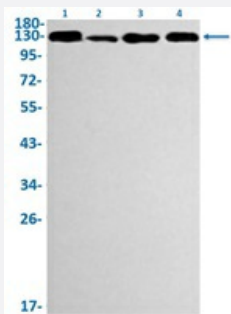


RecomAb™

MCM2 recombinant monoclonal antibody, clone R07-4C3

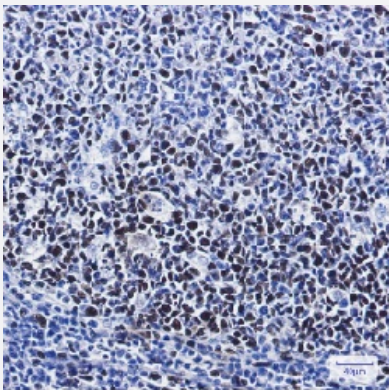
Catalog # RAB01671 Size 100 uL

Applications



Western Blot

Western blot analysis of Lane 1: Jurkat, Lane 2: C6, Lane 3: CHO-K1 and lane 4: HeLa lysates with Phospho-MCM2 (Ser41) recombinant monoclonal antibody, clone R07-4C3 (Cat # RAB01671).



Immunohistochemistry (Formalin/PFA-fixed paraffin-embedded sections)

Immunohistochemistry (Formalin-fixed paraffin-embedded sections) of Human tonsil with MCM2 (Phospho- S41) recombinant monoclonal antibody, clone R07-4C3 (Cat # RAB01671).

Specification

Product Description	Rabbit recombinant monoclonal antibody raised against synthetic phosphopeptide corresponding to residues surrounding Ser41 of human MCM2.
Antibody Species	Rabbit
Immunogen	Original antibody is raised against a synthetic phosphopeptide corresponding to residues surrounding Ser41 of human MCM2
Theoretical MW (kDa)	Calculated MW: 102 k

Reactivity	Human
Form	Liquid
Purification	Affinity purification
Isotype	IgG
Recommend Usage	Immunohistochemistry (1:50-1:100) Immunoprecipitation (1:20) Western Blot (1:500-1:1,000) The optimal working dilution should be determined by the end user.
Storage Buffer	In 50 mM Tris-Glycine, pH 7.4 (0.15 M NaCl, 40% Glycerol, 0.01% Sodium azide and 0.05% BSA)
Storage Instruction	Store at 4°C for short term. For long term storage store at -20°C. Aliquot to avoid repeated freezing and thawing.
Note	This product contains sodium azide: a POISONOUS AND HAZARDOUS SUBSTANCE which should be handled by trained staff only.

Applications

- Western Blot

Western blot analysis of Lane 1: Jurkat, Lane 2: C6, Lane 3: CHO-K1 and lane 4: Hela lysates with Phospho-MCM2 (Ser41) recombinant monoclonal antibody, clone R07-4C3 (Cat # RAB01671).

- Immunohistochemistry (Formalin/PFA-fixed paraffin-embedded sections)

Immunohistochemistry (Formalin-fixed paraffin-embedded sections) of Human tonsil with MCM2 (Phospho- S41) recombinant monoclonal antibody, clone R07-4C3 (Cat # RAB01671).

- Immunoprecipitation

Gene Info — MCM2

Entrez GeneID	4171
Protein Accession#	P49736
Gene Name	MCM2
Gene Alias	BM28, CCNL1, CDCL1, D3S3194, KIAA0030, MGC10606, MITOTIN, cdc19
Gene Description	minichromosome maintenance complex component 2

Omim ID [116945](#)

Gene Ontology [Hyperlink](#)

Gene Summary

The protein encoded by this gene is one of the highly conserved mini-chromosome maintenance proteins (MCM) that are involved in the initiation of eukaryotic genome replication. The hexameric protein complex formed by MCM proteins is a key component of the pre-replication complex (pre-RC) and may be involved in the formation of replication forks and in the recruitment of other DNA replication related proteins. This protein forms a complex with MCM4, 6, and 7, and has been shown to regulate the helicase activity of the complex. This protein is phosphorylated, and thus regulated by, protein kinases CDC2 and CDC7. [provided by RefSeq]

Other Designations

DNA replication licensing factor MCM2|MCM2 minichromosome maintenance deficient 2, mitotin|cell division cycle-like 1|cyclin-like 1|minichromosome maintenance deficient 2 (mitotin)|nuclear protein BM28

Pathway

- [Cell cycle](#)
- [DNA replication](#)

Disease

- [Genetic Predisposition to Disease](#)
- [Ovarian Neoplasms](#)