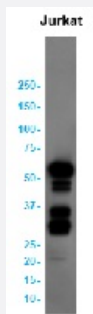


RecomAb™

# CCNB1 recombinant monoclonal antibody, clone R01-7H7

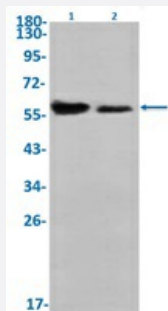
Catalog # RAB01663      Size 100 uL

## Applications



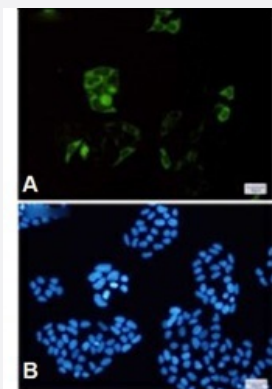
### Western Blot

Western blot analysis of Cyclin B1 in Jurkat lysates using human Cyclin B1 recombinant monoclonal antibody, clone R01-7H7 (Cat # RAB01663).



### Western Blot

Western blot analysis of Lane 1: K562 and Lane 2: HeLa lysates with Cyclin B1 recombinant monoclonal antibody, clone R01-7H7 (Cat # RAB01663).



### Immunocytochemistry

Immunocytochemical staining of HeLa with Cyclin B1 recombinant monoclonal antibody, clone R01-7H7 (Cat # RAB01663). (A) Cyclin B1 (green) and (B) DAPI (blue).

## Specification

Product Description	Rabbit recombinant monoclonal antibody raised against synthetic peptide of human Cyclin B1.
Antibody Species	Rabbit
Immunogen	Original antibody is raised against a synthetic peptide corresponding to human Cyclin B1
Theoretical MW (kDa)	Calculated MW: 48 kD
Reactivity	Human
Form	Liquid
Purification	Affinity purification
Isotype	IgG
Recommend Usage	Immunofluorescence (1:50-1:200) Immunoprecipitation (1:20) Western Blot (1:500-1:1000) The optimal working dilution should be determined by the end user.
Storage Buffer	In 50 mM Tris-Glycine, pH 7.4 (0.15 M NaCl, 40% Glycerol, 0.01% Sodium azide and 0.05% BSA)
Storage Instruction	Store at 4°C for short term. For long term storage store at -20°C. Aliquot to avoid repeated freezing and thawing.
Note	This product contains sodium azide: a POISONOUS AND HAZARDOUS SUBSTANCE which should be handled by trained staff only.

## Applications

- Western Blot

Western blot analysis of Cyclin B1 in Jurkat lysates using human Cyclin B1 recombinant monoclonal antibody, clone R01-7H7 (Cat # RAB01663).

- Western Blot

Western blot analysis of Lane 1: K562 and Lane 2: HeLa lysates with Cyclin B1 recombinant monoclonal antibody, clone R01-7H7 (Cat # RAB01663).

- Immunocytochemistry

Immunocytochemical staining of HeLa with Cyclin B1 recombinant monoclonal antibody, clone R01-7H7 (Cat # RAB01663). (A) Cyclin B1 (green) and (B) DAPI (blue).

- Immunoprecipitation

## Gene Info — CCNB1

Entrez GeneID [891](#)

Protein Accession# [P14635](#)

Gene Name CCNB1

Gene Alias CCNB

Gene Description cyclin B1

Omim ID [123836](#)

Gene Ontology [Hyperlink](#)

**Gene Summary** The protein encoded by this gene is a regulatory protein involved in mitosis. The gene product complexes with p34(cdc2) to form the maturation-promoting factor (MPF). Two alternative transcripts have been found, a constitutively expressed transcript and a cell cycle-regulated transcript, that is expressed predominantly during G2/M phase. The different transcripts result from the use of alternate transcription initiation sites. [provided by RefSeq]

**Other Designations** G2/mitotic-specific cyclin B1

## Pathway

- [Cell cycle](#)
- [p53 signaling pathway](#)

## Disease

- [Adenocarcinoma](#)
- [Esophageal Neoplasms](#)
- [Genetic Predisposition to Disease](#)
- [Ovarian Neoplasms](#)