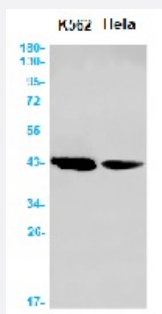


RecomAb™

ADRM1 recombinant monoclonal antibody, clone R07-2A8

Catalog # RAB01625 Size 100 uL

Applications



Western Blot

Western blot analysis of ADRM1 in K562, HeLa lysates using human ADRM1 recombinant monoclonal antibody, clone R07-2A8 (Cat # RAB01625).

Specification

Product Description	Rabbit recombinant monoclonal antibody raised against synthetic peptide of human ADRM1.
Antibody Species	Rabbit
Immunogen	Original antibody is raised against a synthetic peptide corresponding to human ADRM1
Theoretical MW (kDa)	Calculated MW: 42 kD
Reactivity	Human
Form	Liquid
Purification	Affinity purification
Isotype	IgG
Recommend Usage	Immunofluorescence(1:50-1:200) Immunohistochemistry (1:50-1:100) Immunoprecipitation(1:20) Western Blot (1:500-1:1000) The optimal working dilution should be determined by the end user.

Storage Buffer	In 50 mM Tris-Glycine, pH 7.4 (0.15 M NaCl, 40% Glycerol, 0.01% Sodium azide and 0.05% BSA)
Storage Instruction	Store at 4°C for short term. For long term storage store at -20°C. Aliquot to avoid repeated freezing and thawing.
Note	This product contains sodium azide: a POISONOUS AND HAZARDOUS SUBSTANCE which should be handled by trained staff only.

Applications

- Western Blot

Western blot analysis of ADRM1 in K562, Hela lysates using human ADRM1 recombinant monoclonal antibody, clone R07-2A8 (Cat # RAB01625).

- Immunohistochemistry (Formalin/PFA-fixed paraffin-embedded sections)

- Immunohistochemistry (Frozen sections)

- Immunocytochemistry

- Immunoprecipitation

Gene Info — ADRM1

Entrez GeneID	11047
Protein Accession#	Q16186
Gene Name	ADRM1
Gene Alias	ARM1, GP110, MGC29536, Rpn13
Gene Description	adhesion regulating molecule 1
Omim ID	610650
Gene Ontology	Hyperlink
Gene Summary	The protein encoded by this gene is an integral plasma membrane protein which promotes cell adhesion. The encoded protein is thought to undergo O-linked glycosylation. Expression of this gene has been shown to be induced by gamma interferon in some cancer cells. Two transcript variants encoding the same protein have been found for this gene. [provided by RefSeq]

Other Designations

110 kDa cell membrane glycoprotein|M(r) 110,000 surface antigen|OTTHUMP00000031471|regulatory particle non-ATPase 13
