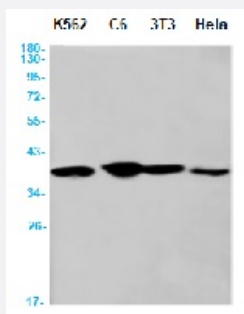


RecomAb™

ANXA1 recombinant monoclonal antibody, clone R08-5A8

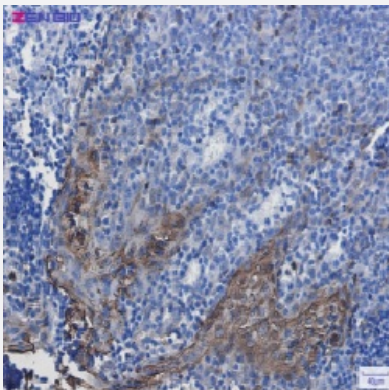
Catalog # RAB01604 Size 100 uL

Applications



Western Blot

Western blot analysis of Annexin A1 in K562, C6, 3T3, HeLa lysates using human Annexin A1 recombinant monoclonal antibody, clone R08-5A8 (Cat # RAB01604).



Immunohistochemistry (Formalin/PFA-fixed paraffin-embedded sections)

Immunohistochemistry (Formalin-fixed paraffin-embedded sections) of Human tonsil with Annexin A1 recombinant monoclonal antibody, clone R08-5A8 (Cat # RAB01604).

Specification

Product Description	Rabbit recombinant monoclonal antibody raised against human Annexin A1.
Antibody Species	Rabbit
Immunogen	Original antibody is raised against recombinant protein corresponding to human Annexin A1
Theoretical MW (kDa)	Calculated MW: 39 kD
Reactivity	Human

Form	Liquid
Purification	Affinity purification
Isotype	IgG
Recommend Usage	Immunofluorescence(1:50-1:200) Immunohistochemistry (1:50-1:100) Immunoprecipitation(1:20) Western Blot (1:500-1:1000) The optimal working dilution should be determined by the end user.
Storage Buffer	In 50 mM Tris-Glycine, pH 7.4 (0.15 M NaCl, 40% Glycerol, 0.01% Sodium azide and 0.05% BSA)
Storage Instruction	Store at 4°C for short term. For long term storage store at -20°C. Aliquot to avoid repeated freezing and thawing.
Note	This product contains sodium azide: a POISONOUS AND HAZARDOUS SUBSTANCE which should be handled by trained staff only.

Applications

- Western Blot

Western blot analysis of Annexin A1 in K562, C6, 3T3, Hela lysates using human Annexin A1 recombinant monoclonal antibody, clone R08-5A8 (Cat # RAB01604).

- Immunohistochemistry (Formalin/PFA-fixed paraffin-embedded sections)

Immunohistochemistry (Formalin-fixed paraffin-embedded sections) of Human tonsil with Annexin A1 recombinant monoclonal antibody, clone R08-5A8 (Cat # RAB01604).

- Immunohistochemistry (Frozen sections)

- Immunocytochemistry

- Immunoprecipitation

Gene Info — ANXA1

Entrez GeneID	301
Protein Accession#	P04083
Gene Name	ANXA1

Gene Alias	ANX1, LPC1
Gene Description	annexin A1
Omim ID	151690
Gene Ontology	Hyperlink
Gene Summary	<p>Annexin I belongs to a family of Ca(2+)-dependent phospholipid binding proteins which have a molecular weight of approximately 35,000 to 40,000 and are preferentially located on the cytosolic face of the plasma membrane. Annexin I protein has an apparent relative molecular mass of 40 kDa, with phospholipase A2 inhibitory activity. Since phospholipase A2 is required for the biosynthesis of the potent mediators of inflammation, prostaglandins and leukotrienes, annexin I may have potential anti-inflammatory activity. [provided by RefSeq]</p>
Other Designations	OTTHUMP00000021474 OTTHUMP00000021475 annexin I annexin I (lipocortin I) lipocortin I

Disease

- [Cardiovascular Diseases](#)
- [Diabetes Mellitus](#)
- [Edema](#)