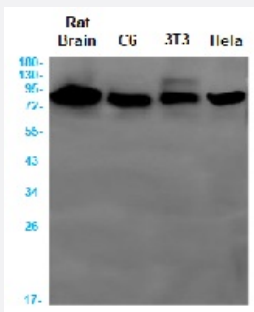


RecomAb™

APPL1 recombinant monoclonal antibody, clone R05-8D5

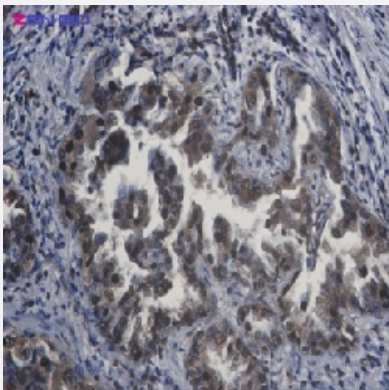
Catalog # RAB01597 Size 100 uL

Applications



Western Blot

Western blot analysis of APPL in rat Brain, C6, 3T3, HeLa lysates using human APPL recombinant monoclonal antibody, clone R05-8D5 (Cat # RAB01597).



Immunohistochemistry (Formalin/PFA-fixed paraffin-embedded sections)

Immunohistochemistry (Formalin-fixed paraffin-embedded sections) of Human lung cancer with APPL recombinant monoclonal antibody, clone R05-8D5 (Cat # RAB01597).

Specification

| | |
|-----------------------------|----------------------------------------------------------------------------------------|
| Product Description | Rabbit recombinant monoclonal antibody raised against synthetic peptide of human APPL. |
| Antibody Species | Rabbit |
| Immunogen | Original antibody is raised against a synthetic peptide corresponding to human APPL |
| Theoretical MW (kDa) | Calculated MW: 80 kD |
| Reactivity | Human |

| | |
|---------------------|----------------------------------------------------------------------------------------------------------------------------------------|
| Form | Liquid |
| Purification | Affinity purification |
| Isotype | IgG |
| Recommend Usage | Immunohistochemistry (1:50-1:100) Western Blot (1:500-1:1000) The optimal working dilution should be determined by the end user. |
| Storage Buffer | In 50 mM Tris-Glycine, pH 7.4 (0.15 M NaCl, 40% Glycerol, 0.01% Sodium azide and 0.05% BSA) |
| Storage Instruction | Store at 4°C for short term. For long term storage store at -20°C. Aliquot to avoid repeated freezing and thawing. |
| Note | This product contains sodium azide: a POISONOUS AND HAZARDOUS SUBSTANCE which should be handled by trained staff only. |

Applications

- Western Blot

Western blot analysis of APPL in rat Brain, C6, 3T3, Hela lysates using human APPL recombinant monoclonal antibody, clone R05-8D5 (Cat # RAB01597).

- Immunohistochemistry (Formalin/PFA-fixed paraffin-embedded sections)

Immunohistochemistry (Formalin-fixed paraffin-embedded sections) of Human lung cancer with APPL recombinant monoclonal antibody, clone R05-8D5 (Cat # RAB01597).

Gene Info — APPL1

| | |
|--------------------|-----------------------------------------------------------------------------------------|
| Entrez GeneID | 26060 |
| Protein Accession# | Q9UKG1 |
| Gene Name | APPL1 |
| Gene Alias | APPL, DIP13alpha |
| Gene Description | adaptor protein, phosphotyrosine interaction, PH domain and leucine zipper containing 1 |
| Omim ID | 604299 |
| Gene Ontology | Hyperlink |

Gene Summary

The protein encoded by this gene has been shown to be involved in the regulation of cell proliferation, and in the crosstalk between the adiponectin signalling and insulin signalling pathways. The encoded protein binds many other proteins, including RAB5A, DCC, AKT2, PIK3CA, adiponectin receptors, and proteins of the NuRD/MeCP1 complex. This protein is found associated with endosomal membranes, but can be released by EGF and translocated to the nucleus. [provided by RefSeq]

Other Designations

AKT2 interactor|adaptor protein containing pH domain, PTB domain and leucine zipper motif 1|signaling adaptor protein DIP13alpha

Pathway

- [Colorectal cancer](#)
- [Pathways in cancer](#)

Disease

- [Diabetes Mellitus](#)
- [Dyslipidemias](#)
- [Inflammation](#)
- [Insulin Resistance](#)
- [Prediabetic State](#)