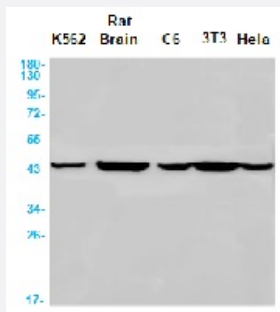


RecomAb™

# ACTR3 recombinant monoclonal antibody, clone R08-2A2

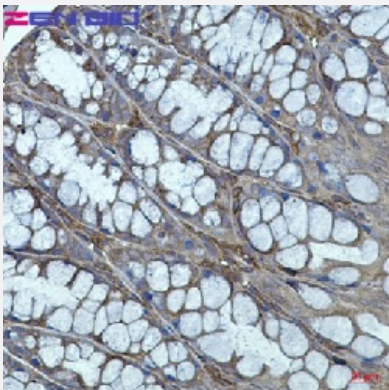
Catalog # RAB01590      Size 100 uL

## Applications



### Western Blot

Western blot analysis of Arp3 in K562, rat Brain, C6, 3T3, HeLa lysates using human Arp3 recombinant monoclonal antibody, clone R08-2A2 (Cat # RAB01590).



### Immunohistochemistry (Formalin/PFA-fixed paraffin-embedded sections)

Immunohistochemistry (Formalin-fixed paraffin-embedded sections) of mouse colon with Actin Related Protein 3 recombinant monoclonal antibody, clone R08-2A2 (Cat # RAB01590).

## Specification

<b>Product Description</b>	Rabbit recombinant monoclonal antibody raised against synthetic peptide of human Arp3.
<b>Antibody Species</b>	Rabbit
<b>Immunogen</b>	Original antibody is raised against a synthetic peptide corresponding to human Arp3
<b>Theoretical MW (kDa)</b>	Calculated MW: 47 kD
<b>Reactivity</b>	Human

Form	Liquid
Purification	Affinity purification
Isotype	IgG
Recommend Usage	Immunofluorescence(1:50-1:200) Immunohistochemistry (1:50-1:100) Western Blot (1:500-1:1000) The optimal working dilution should be determined by the end user.
Storage Buffer	In 50 mM Tris-Glycine, pH 7.4 (0.15 M NaCl, 40% Glycerol, 0.01% Sodium azide and 0.05% BSA)
Storage Instruction	Store at 4°C for short term. For long term storage store at -20°C. Aliquot to avoid repeated freezing and thawing.
Note	This product contains sodium azide: a POISONOUS AND HAZARDOUS SUBSTANCE which should be handled by trained staff only.

## Applications

- Western Blot

Western blot analysis of Arp3 in K562, rat Brain, C6, 3T3, Hela lysates using human Arp3 recombinant monoclonal antibody, clone R08-2A2 (Cat # RAB01590).

- Immunohistochemistry (Formalin/PFA-fixed paraffin-embedded sections)

Immunohistochemistry (Formalin-fixed paraffin-embedded sections) of mouse colon with Actin Related Protein 3 recombinant monoclonal antibody, clone R08-2A2 (Cat # RAB01590).

- Immunohistochemistry (Frozen sections)

- Immunocytochemistry

## Gene Info — ACTR3

Entrez GeneID	<a href="#">10096</a>
Protein Accession#	<a href="#">P61158</a>
Gene Name	ACTR3
Gene Alias	ARP3
Gene Description	ARP3 actin-related protein 3 homolog (yeast)

Omim ID	<a href="#">604222</a>
---------	------------------------

Gene Ontology	<a href="#">Hyperlink</a>
---------------	---------------------------

Gene Summary	The specific function of this gene has not yet been determined; however, the protein it encodes is known to be a major constituent of the ARP2/3 complex. This complex is located at the cell surface and is essential to cell shape and motility through lamellipodial actin assembly and protrusion. [provided by RefSeq]
--------------	---

Other Designations	ARP3 actin-related protein 3 homolog
--------------------	--------------------------------------