

RecomAb™

ARTN recombinant monoclonal antibody, clone R06-6F8

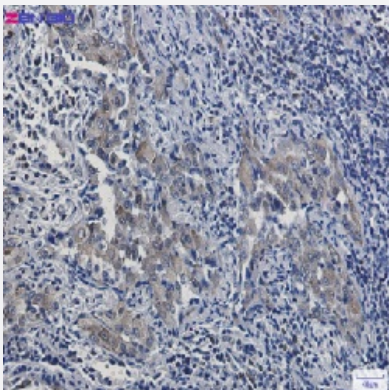
Catalog # RAB01588 Size 100 uL

Applications



Western Blot

Western blot analysis of Artemin in K562, rat Brain, C6, 3T3, HeLa lysates using human Artemin recombinant monoclonal antibody, clone R06-6F8 (Cat # RAB01588).



Immunohistochemistry (Formalin/PFA-fixed paraffin-embedded sections)

Immunohistochemistry (Formalin-fixed paraffin-embedded sections) of Human lung cancer with Artemin recombinant monoclonal antibody, clone R06-6F8 (Cat # RAB01588).

Specification

| | |
|-----------------------------|---|
| Product Description | Rabbit recombinant monoclonal antibody raised against synthetic peptide of human Artemin. |
| Antibody Species | Rabbit |
| Immunogen | Original antibody is raised against a synthetic peptide corresponding to human Artemin |
| Theoretical MW (kDa) | Calculated MW: 23 kD |
| Reactivity | Human |

| | |
|---------------------|---|
| Form | Liquid |
| Purification | Affinity purification |
| Isotype | IgG |
| Recommend Usage | Immunohistochemistry (1:50-1:100) Immunoprecipitation(1:20) Western Blot (1:500-1:1000) The optimal working dilution should be determined by the end user. |
| Storage Buffer | In 50 mM Tris-Glycine, pH 7.4 (0.15 M NaCl, 40% Glycerol, 0.01% Sodium azide and 0.05% BSA) |
| Storage Instruction | Store at 4°C for short term. For long term storage store at -20°C. Aliquot to avoid repeated freezing and thawing. |
| Note | This product contains sodium azide: a POISONOUS AND HAZARDOUS SUBSTANCE which should be handled by trained staff only. |

Applications

- Western Blot

Western blot analysis of Artemin in K562, rat Brain, C6, 3T3, Hela lysates using human Artemin recombinant monoclonal antibody, clone R06-6F8 (Cat # RAB01588).

- Immunohistochemistry (Formalin/PFA-fixed paraffin-embedded sections)

Immunohistochemistry (Formalin-fixed paraffin-embedded sections) of Human lung cancer with Artemin recombinant monoclonal antibody, clone R06-6F8 (Cat # RAB01588).

- Immunoprecipitation

Gene Info — ARTN

| | |
|--------------------|------------------------|
| Entrez GeneID | 9048 |
| Protein Accession# | Q5T4W7 |
| Gene Name | ARTN |
| Gene Alias | ENOVIN, EVN, NBN |
| Gene Description | artemin |
| Omim ID | 603886 |

Gene Ontology

[Hyperlink](#)

Gene Summary

The protein encoded by this gene is a member of the glial cell line-derived neurotrophic factor (GDNF) family of ligands which are a group of ligands within the TGF-beta superfamily of signaling molecules. GDNFs are unique in having neurotrophic properties and have potential use for gene therapy in neurodegenerative disease. Artemin has been shown in culture to support the survival of a number of peripheral neuron populations and at least one population of dopaminergic CNS neurons. Its role in the PNS and CNS is further substantiated by its expression pattern in the proximity of these neurons. This protein is a ligand for the RET receptor and uses GFR-alpha 3 as a coreceptor. Multiple transcript variants encoding different isoforms have been found for this gene. [provided by RefSeq]

Other Designations

OTTHUMP00000009173|OTTHUMP00000009174|neublastin|neurotrophic factor|neurotrophic factor artemin

Disease

- [Genetic Predisposition to Disease](#)
- [Hirschsprung Disease](#)