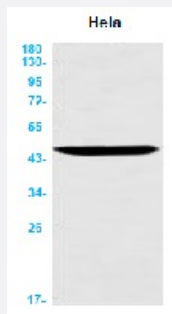


RecomAb™

ASS1 recombinant monoclonal antibody, clone R02-7A8

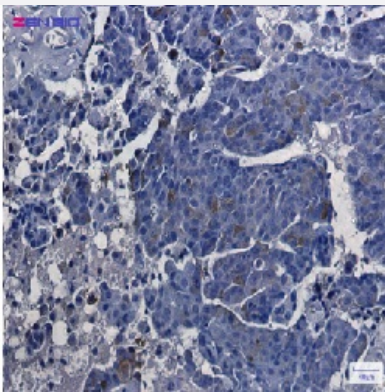
Catalog # RAB01583 Size 100 uL

Applications



Western Blot

Western blot analysis of ASS1 in HeLa lysates using human ASS1 recombinant monoclonal antibody, clone R02-7A8 (Cat # RAB01583).



Immunohistochemistry (Formalin/PFA-fixed paraffin-embedded sections)

Immunohistochemistry (Formalin-fixed paraffin-embedded sections) of Human breast cancer with ASS1 recombinant monoclonal antibody, clone R02-7A8 (Cat # RAB01583).

Specification

Product Description	Rabbit recombinant monoclonal antibody raised against synthetic peptide of human ASS13.
Antibody Species	Rabbit
Immunogen	Original antibody is raised against a synthetic peptide corresponding to human ASS1
Theoretical MW (kDa)	Calculated MW: 47 kD
Reactivity	Human

Form	Liquid
Purification	Affinity purification
Isotype	IgG
Recommend Usage	Immunofluorescence(1:50-1:200) Immunohistochemistry (1:50-1:100) Immunoprecipitation(1:20) Western Blot (1:500-1:1000) The optimal working dilution should be determined by the end user.
Storage Buffer	In 50 mM Tris-Glycine, pH 7.4 (0.15 M NaCl, 40% Glycerol, 0.01% Sodium azide and 0.05% BSA)
Storage Instruction	Store at 4°C for short term. For long term storage store at -20°C. Aliquot to avoid repeated freezing and thawing.
Note	This product contains sodium azide: a POISONOUS AND HAZARDOUS SUBSTANCE which should be handled by trained staff only.

Applications

- Western Blot

Western blot analysis of ASS1 in Hela lysates using human ASS1 recombinant monoclonal antibody, clone R02-7A8 (Cat # RAB01583).

- Immunohistochemistry (Formalin/PFA-fixed paraffin-embedded sections)

Immunohistochemistry (Formalin-fixed paraffin-embedded sections) of Human breast cancer with ASS1 recombinant monoclonal antibody, clone R02-7A8 (Cat # RAB01583).

- Immunohistochemistry (Frozen sections)

- Immunocytochemistry

- Immunoprecipitation

Gene Info — ASS1

Entrez GeneID	445
Protein Accession#	P00966
Gene Name	ASS1

Gene Alias	ASS, CTLN1
Gene Description	argininosuccinate synthetase 1
Omim ID	215700 603470
Gene Ontology	Hyperlink
Gene Summary	<p>The protein encoded by this gene catalyzes the penultimate step of the arginine biosynthetic pathway. There are approximately 10 to 14 copies of this gene including the pseudogenes scattered across the human genome, among which the one located on chromosome 9 appears to be the only functional gene for argininosuccinate synthetase. Mutations in the chromosome 9 copy of ASS cause citrullinemia. Two transcript variants encoding the same protein have been found for this gene . [provided by RefSeq]</p>
Other Designations	OTTHUMP00000022362 OTTHUMP00000022363 OTTHUMP00000022364 citrulline--aspartate ligase

Pathway

- [Alanine](#)
- [Arginine and proline metabolism](#)
- [Metabolic pathways](#)

Disease

- [Cardiovascular Diseases](#)
- [Diabetes Mellitus](#)
- [Edema](#)