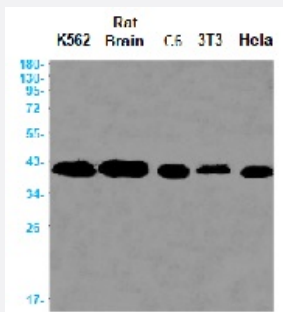


RecomAb™

# ATG3 recombinant monoclonal antibody, clone R06-9E7

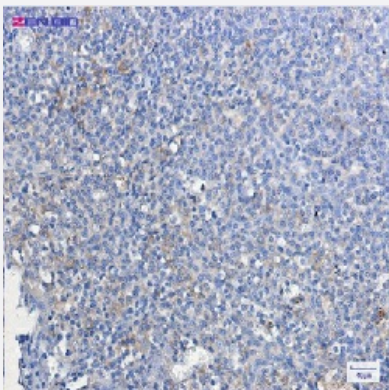
Catalog # RAB01581      Size 100 uL

## Applications



### Western Blot

Western blot analysis of ATG3 in K562, rat Brain, C6, 3T3, HeLa lysates using human ATG3 recombinant monoclonal antibody, clone R06-9E7 (Cat # RAB01581).



### Immunohistochemistry (Formalin/PFA-fixed paraffin-embedded sections)

Immunohistochemistry (Formalin-fixed paraffin-embedded sections) of Human tonsil with ATG3 recombinant monoclonal antibody, clone R06-9E7 (Cat # RAB01581).

## Specification

<b>Product Description</b>	Rabbit recombinant monoclonal antibody raised against synthetic peptide of human ATG3.
<b>Antibody Species</b>	Rabbit
<b>Immunogen</b>	Original antibody is raised against a synthetic peptide corresponding to human ATG3
<b>Theoretical MW (kDa)</b>	Calculated MW: 36 kD
<b>Reactivity</b>	Human

<b>Form</b>	Liquid
<b>Purification</b>	Affinity purification
<b>Isotype</b>	IgG
<b>Recommend Usage</b>	Immunofluorescence(1:50-1:200) Immunohistochemistry (1:50-1:100) Western Blot (1:500-1:1000) The optimal working dilution should be determined by the end user.
<b>Storage Buffer</b>	In 50mM Tris-Glycine, pH 7.4, (0.15M NaCl, 40% Glycerol, 0.01% Sodium azide and 0.05% BSA)
<b>Storage Instruction</b>	Store at 4°C for short term. For long term storage store at -20°C. Aliquot to avoid repeated freezing and thawing.
<b>Note</b>	This product contains sodium azide: a POISONOUS AND HAZARDOUS SUBSTANCE which should be handled by trained staff only.

## Applications

- Western Blot

Western blot analysis of ATG3 in K562, rat Brain, C6, 3T3, Hela lysates using human ATG3 recombinant monoclonal antibody, clone R06-9E7 (Cat # RAB01581).

- Immunohistochemistry (Formalin/PFA-fixed paraffin-embedded sections)

Immunohistochemistry (Formalin-fixed paraffin-embedded sections) of Human tonsil with ATG3 recombinant monoclonal antibody, clone R06-9E7 (Cat # RAB01581).

- Immunohistochemistry (Frozen sections)

- Immunocytochemistry

## Gene Info — ATG3

<b>Entrez GeneID</b>	<a href="#">64422</a>
<b>Protein Accession#</b>	<a href="#">Q9NT62</a>
<b>Gene Name</b>	ATG3
<b>Gene Alias</b>	APG3, APG3-LIKE, APG3L, DKFZp564M1178, FLJ22125, MGC15201, PC3-96
<b>Gene Description</b>	ATG3 autophagy related 3 homolog (S. cerevisiae)

Omim ID	<a href="#">609606</a>
Gene Ontology	<a href="#">Hyperlink</a>
Gene Summary	Autophagy is a process of bulk degradation of cytoplasmic components by the lysosome or vacuole. Human ATG3 displays the same enzymatic characteristics in vitro as yeast Apg3, a protein-conjugating enzyme essential for autophagy (Tanida et al., 2002 [PubMed 11825910]).[supplied by OMIM]
Other Designations	2610016C12Rik APG3 autophagy 3-like Apg3p autophagy Apg3p/Aut1p-like

## Pathway

- [Regulation of autophagy](#)

## Disease

- [Huntington Disease](#)