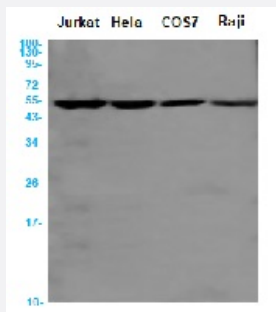


RecomAb™

ATP5F1B recombinant monoclonal antibody, clone R01-4G1

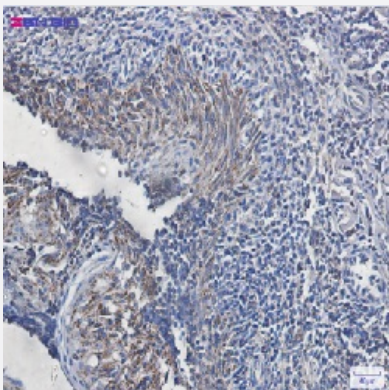
Catalog # RAB01577 Size 100 uL

Applications



Western Blot

Western blot analysis of ATPB in Jurkat, Hela, COS7, Raji lysates using human ATPB recombinant monoclonal antibody, clone R01-4G1 (Cat # RAB01577).



Immunohistochemistry (Formalin/PFA-fixed paraffin-embedded sections)

Immunohistochemistry (Formalin-fixed paraffin-embedded sections) of Human tonsil with ATPB recombinant monoclonal antibody, clone R01-4G1 (Cat # RAB01577).

Specification

Product Description	Rabbit recombinant monoclonal antibody raised against synthetic peptide of human ATPB.
Antibody Species	Rabbit
Immunogen	Original antibody is raised against a synthetic peptide corresponding to human ATPB
Theoretical MW (kDa)	Calculated MW: 57 kD
Reactivity	Human

Form	Liquid
Purification	Affinity purification
Isotype	IgG
Recommend Usage	Immunofluorescence(1:50-1:200) Immunohistochemistry (1:50-1:100) Immunoprecipitation(1:20) Western Blot (1:500-1:1000) The optimal working dilution should be determined by the end user.
Storage Buffer	In 50mM Tris-Glycine, pH 7.4, (0.15M NaCl, 40% Glycerol, 0.01% Sodium azide and 0.05% BSA)
Storage Instruction	Store at 4°C for short term. For long term storage store at -20°C. Aliquot to avoid repeated freezing and thawing.
Note	This product contains sodium azide: a POISONOUS AND HAZARDOUS SUBSTANCE which should be handled by trained staff only.

Applications

- Western Blot

Western blot analysis of ATPB in Jurkat, Hela, COS7, Raji lysates using human ATPB recombinant monoclonal antibody, clone R01-4G1 (Cat # RAB01577).

- Immunohistochemistry (Formalin/PFA-fixed paraffin-embedded sections)

Immunohistochemistry (Formalin-fixed paraffin-embedded sections) of Human tonsil with ATPB recombinant monoclonal antibody, clone R01-4G1 (Cat # RAB01577).

- Immunohistochemistry (Frozen sections)

- Immunocytochemistry

- Immunoprecipitation

Gene Info — ATP5B

Entrez GeneID	506
Protein Accession#	P06576
Gene Name	ATP5B

Gene Alias	ATPMB, ATPSB, MGC5231
Gene Description	ATP synthase, H+ transporting, mitochondrial F1 complex, beta polypeptide
Omim ID	102910
Gene Ontology	Hyperlink
Gene Summary	<p>This gene encodes a subunit of mitochondrial ATP synthase. Mitochondrial ATP synthase catalyzes ATP synthesis, utilizing an electrochemical gradient of protons across the inner membrane during oxidative phosphorylation. ATP synthase is composed of two linked multi-subunit complexes: the soluble catalytic core, F1, and the membrane-spanning component, Fo, comprising the proton channel. The catalytic portion of mitochondrial ATP synthase consists of 5 different subunits (alpha, beta, gamma, delta, and epsilon) assembled with a stoichiometry of 3 alpha, 3 beta, and a single representative of the other 3. The proton channel consists of three main subunits (a, b, c). This gene encodes the beta subunit of the catalytic core. [provided by RefSeq]</p>
Other Designations	ATP synthase, H+ transporting, mitochondrial F1 complex, beta subunit mitochondrial ATP synthase, beta subunit

Pathway

- [Metabolic pathways](#)
- [Oxidative phosphorylation](#)

Disease

- [Coronary Artery Disease](#)