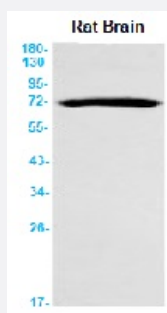


RecomAb™

# BACE1 recombinant monoclonal antibody, clone R03-9C8

Catalog # RAB01572      Size 100 uL

## Applications



### Western Blot

Western blot analysis of BACE1 in rat Brain lysates using mouse BACE1 recombinant monoclonal antibody, clone R03-9C8 (Cat # RAB01572).

## Specification

Product Description	Rabbit recombinant monoclonal antibody raised against mouse BACE1.
Antibody Species	Rabbit
Immunogen	Original antibody is raised against recombinant protein corresponding to mouse BACE1
Theoretical MW (kDa)	Calculated MW: 56 kD
Reactivity	Mouse
Form	Liquid
Purification	Affinity purification
Isotype	IgG
Recommend Usage	Immunoprecipitation (1:20) Western Blot (1:500-1:1000) The optimal working dilution should be determined by the end user.
Storage Buffer	In 50 mM Tris-Glycine, pH 7.4 (0.15 M NaCl, 40% Glycerol, 0.01% Sodium azide and 0.05% BSA)

**Storage Instruction**

Store at 4°C for short term. For long term storage store at -20°C.  
Aliquot to avoid repeated freezing and thawing.

**Note**

This product contains sodium azide: a POISONOUS AND HAZARDOUS SUBSTANCE which should be handled by trained staff only.

## Applications

- Western Blot

Western blot analysis of BACE1 in rat Brain lysates using mouse BACE1 recombinant monoclonal antibody, clone R03-9C8 (Cat # RAB01572).

- Immunoprecipitation

## Gene Info — Bace1

**Entrez GeneID**[23821](#)**Protein Accession#**[P56818](#)**Gene Name**

Bace1

**Gene Alias**

C76936

**Gene Description**

beta-site APP cleaving enzyme 1

**Gene Ontology**[Hyperlink](#)**Other Designations**

APP beta-secretase