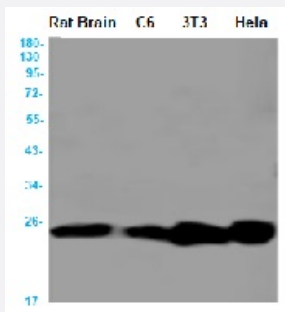


RecomAb™

BAD recombinant monoclonal antibody, clone R07-1B6

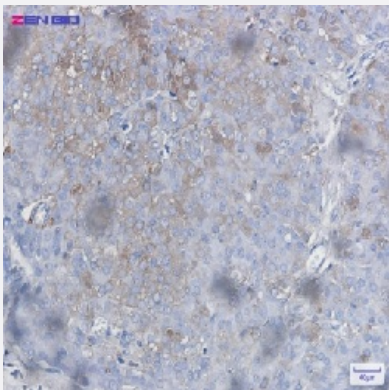
Catalog # RAB01571 Size 100 uL

Applications



Western Blot

Western blot analysis of Bad in rat Brain, C6, 3T3, HeLa lysates using human Bad recombinant monoclonal antibody, clone R07-1B6 (Cat # RAB01571).



Immunohistochemistry (Formalin/PFA-fixed paraffin-embedded sections)

Immunohistochemistry (Formalin-fixed paraffin-embedded sections) of Human breast cancer with Bad recombinant monoclonal antibody, clone R07-1B6 (Cat # RAB01571).

Specification

Product Description	Rabbit recombinant monoclonal antibody raised against synthetic peptide of human Bad.
Antibody Species	Rabbit
Immunogen	Original antibody is raised against a synthetic peptide corresponding to human Bad
Theoretical MW (kDa)	Calculated MW: 18 kD
Reactivity	Human

Form	Liquid
Purification	Affinity purification
Isotype	IgG
Recommend Usage	Immunofluorescence (1:50-1:200) Immunohistochemistry (1:50-1/100) Immunoprecipitation (1:20) Western Blot (1:500-1:1000) The optimal working dilution should be determined by the end user.
Storage Buffer	In 50 mM Tris-Glycine, pH 7.4 (0.15 M NaCl, 40% Glycerol, 0.01% Sodium azide and 0.05% BSA)
Storage Instruction	Store at 4°C for short term. For long term storage store at -20°C. Aliquot to avoid repeated freezing and thawing.
Note	This product contains sodium azide: a POISONOUS AND HAZARDOUS SUBSTANCE which should be handled by trained staff only.

Applications

- Western Blot

Western blot analysis of Bad in rat Brain, C6, 3T3, Hela lysates using human Bad recombinant monoclonal antibody, clone R07-1B6 (Cat # RAB01571).

- Immunohistochemistry (Formalin/PFA-fixed paraffin-embedded sections)

Immunohistochemistry (Formalin-fixed paraffin-embedded sections) of Human breast cancer with Bad recombinant monoclonal antibody, clone R07-1B6 (Cat # RAB01571).

- Immunohistochemistry (Frozen sections)

- Immunocytochemistry

- Immunoprecipitation

Gene Info — BAD

Entrez GeneID	572
Protein Accession#	Q92934
Gene Name	BAD

Gene Alias	BBC2, BCL2L8
Gene Description	BCL2-associated agonist of cell death
Omim ID	603167
Gene Ontology	Hyperlink
Gene Summary	The protein encoded by this gene is a member of the BCL-2 family. BCL-2 family members are known to be regulators of programmed cell death. This protein positively regulates cell apoptosis by forming heterodimers with BCL-xL and BCL-2, and reversing their death repressor activity. Proapoptotic activity of this protein is regulated through its phosphorylation. Protein kinases AKT and MAP kinase, as well as protein phosphatase calcineurin were found to be involved in the regulation of this protein. Alternative splicing of this gene results in two transcript variants which encode the same isoform. [provided by RefSeq]
Other Designations	BCL-X/BCL-2 binding protein BCL2-antagonist of cell death protein BCL2-binding component 6 BCL2-binding protein

Pathway

- [Acute myeloid leukemia](#)
- [Amyotrophic lateral sclerosis \(ALS\)](#)
- [Apoptosis](#)
- [Chronic myeloid leukemia](#)
- [Colorectal cancer](#)
- [Endometrial cancer](#)
- [ErbB signaling pathway](#)
- [Focal adhesion](#)
- [Insulin signaling pathway](#)
- [Melanoma](#)
- [Neurotrophin signaling pathway](#)
- [Non-small cell lung cancer](#)
- [Pancreatic cancer](#)
- [Pathways in cancer](#)

- [Prostate cancer](#)
- [VEGF signaling pathway](#)

Disease

- [Cardiovascular Diseases](#)
- [Diabetes Mellitus](#)
- [Edema](#)
- [Genetic Predisposition to Disease](#)
- [Lymphoma](#)
- [Parkinson disease](#)
- [Thyroid Neoplasms](#)