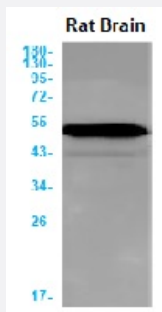


RecomAb™

# TUBB3 recombinant monoclonal antibody, clone R08-6A3

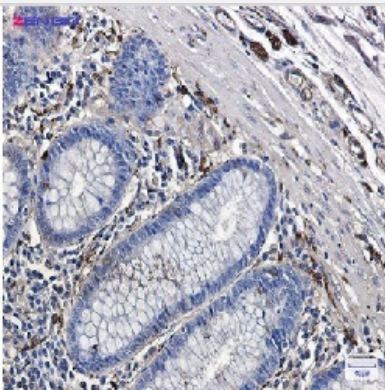
Catalog # RAB01558      Size 100 uL

## Applications



### Western Blot

Western blot analysis of beta III Tubulin in rat Brain lysates using human beta III Tubulin recombinant monoclonal antibody, clone R08-6A3 (Cat # RAB01558).



### Immunohistochemistry (Formalin/PFA-fixed paraffin-embedded sections)

Immunohistochemistry (Formalin-fixed paraffin-embedded sections) of Human colon cancer with beta III Tubulin recombinant monoclonal antibody, clone R08-6A3 (Cat # RAB01558).

## Specification

Product Description	Rabbit recombinant monoclonal antibody raised against synthetic peptide of human beta III Tubulin.
Antibody Species	Rabbit
Immunogen	Original antibody is raised against a synthetic peptide corresponding to human beta III Tubulin
Theoretical MW (kDa)	Calculated MW: 50 kD
Reactivity	Human

<b>Form</b>	Liquid
<b>Purification</b>	Affinity purification
<b>Isotype</b>	IgG
<b>Recommend Usage</b>	Immunofluorescence (1:50-1:200) Immunohistochemistry (1:50-1/100) Immunoprecipitation (1:20) Western Blot (1:500-1:1000) The optimal working dilution should be determined by the end user.
<b>Storage Buffer</b>	In 50 mM Tris-Glycine, pH 7.4 (0.15 M NaCl, 40% Glycerol, 0.01% Sodium azide and 0.05% BSA)
<b>Storage Instruction</b>	Store at 4°C for short term. For long term storage store at -20°C. Aliquot to avoid repeated freezing and thawing.
<b>Note</b>	This product contains sodium azide: a POISONOUS AND HAZARDOUS SUBSTANCE which should be handled by trained staff only.

## Applications

- Western Blot

Western blot analysis of beta III Tubulin in rat Brain lysates using human beta III Tubulin recombinant monoclonal antibody, clone R08-6A3 (Cat # RAB01558).

- Immunohistochemistry (Formalin/PFA-fixed paraffin-embedded sections)

Immunohistochemistry (Formalin-fixed paraffin-embedded sections) of Human colon cancer with beta III Tubulin recombinant monoclonal antibody, clone R08-6A3 (Cat # RAB01558).

- Immunohistochemistry (Frozen sections)

- Immunocytochemistry

- Immunoprecipitation

## Gene Info — TUBB3

<b>Entrez GeneID</b>	<a href="#">10381</a>
<b>Protein Accession#</b>	<a href="#">Q13509</a>
<b>Gene Name</b>	TUBB3

Gene Alias	MC1R, TUBB4, beta-4
Gene Description	tubulin, beta 3
Omim ID	<a href="#">602661</a>
Gene Ontology	<a href="#">Hyperlink</a>
Gene Summary	O
Other Designations	tubulin, beta, 4

## Pathway

- [Gap junction](#)
- [Pathogenic Escherichia coli infection - EHEC](#)