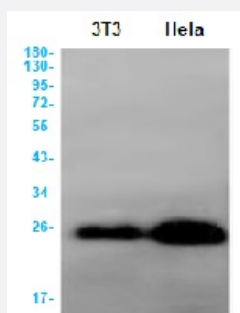


RecomAb™

BCL2L11 recombinant monoclonal antibody, clone R08-5A2

Catalog # RAB01556 Size 100 uL

Applications



Western Blot

Western blot analysis of Bim in 3T3, HeLa lysates using human Bim recombinant monoclonal antibody, clone R08-5A2 (Cat # RAB01556).

Specification

Product Description	Rabbit recombinant monoclonal antibody raised against synthetic peptide of human Bim.
Antibody Species	Rabbit
Immunogen	Original antibody is raised against a synthetic peptide corresponding to human Bim
Theoretical MW (kDa)	Calculated MW: 22 kD
Reactivity	Human
Form	Liquid
Purification	Affinity purification
Isotype	IgG
Recommend Usage	Immunofluorescence (1:50-1:200) Immunohistochemistry (1:50-1/100) Immunoprecipitation (1:20) Western Blot (1:500-1:1000) The optimal working dilution should be determined by the end user.

Storage Buffer	In 50 mM Tris-Glycine, pH 7.4 (0.15 M NaCl, 40% Glycerol, 0.01% Sodium azide and 0.05% BSA)
Storage Instruction	Store at 4°C for short term. For long term storage store at -20°C. Aliquot to avoid repeated freezing and thawing.
Note	This product contains sodium azide: a POISONOUS AND HAZARDOUS SUBSTANCE which should be handled by trained staff only.

Applications

- Western Blot

Western blot analysis of Bim in 3T3, Hela lysates using human Bim recombinant monoclonal antibody, clone R08-5A2 (Cat # RAB01556).

- Immunohistochemistry (Formalin/PFA-fixed paraffin-embedded sections)

- Immunohistochemistry (Frozen sections)

- Immunocytochemistry

- Immunoprecipitation

Gene Info — BCL2L11

Entrez GeneID	10018
Protein Accession#	O43521
Gene Name	BCL2L11
Gene Alias	BAM, BIM, BIM-alpha6, BIM-beta6, BIM-beta7, BOD, BimEL, BimL
Gene Description	BCL2-like 11 (apoptosis facilitator)
Omim ID	603827
Gene Ontology	Hyperlink

Gene Summary

The protein encoded by this gene belongs to the BCL-2 protein family. BCL-2 family members form hetero- or homodimers and act as anti- or pro-apoptotic regulators that are involved in a wide variety of cellular activities. The protein encoded by this gene contains a Bcl-2 homology domain 3 (BH3). It has been shown to interact with other members of the BCL-2 protein family, including BCL2, BCL2L1/BCL-X(L), and MCL1, and to act as an apoptotic activator. The expression of this gene can be induced by nerve growth factor (NGF), as well as by the forkhead transcription factor FOXO1, which suggests a role of this gene in neuronal and lymphocyte apoptosis. Transgenic studies of the mouse counterpart suggested that this gene functions as an essential initiator of apoptosis in thymocyte-negative selection. Several alternatively spliced transcript variants of this gene have been identified. [provided by RefSeq]

Other Designations

BCL2-like 11|bcl-2 interacting mediator of cell death|bcl-2 interacting protein Bim|bcl-2-related ovarian death agonist

Disease

- [Adenocarcinoma](#)
- [Disease Progression](#)
- [Genetic Predisposition to Disease](#)
- [Head and Neck Neoplasms](#)
- [Hematologic Diseases](#)
- [Hodgkin Disease](#)
- [Leukemia](#)
- [Lymphatic Metastasis](#)
- [Lymphoma](#)
- [Lymphoproliferative Disorders](#)
- [Neoplasm Recurrence](#)
- [Neoplasms](#)
- [Neovascularization](#)
- [Occupational Diseases](#)
- [Stomach Neoplasms](#)
- [Waldenstrom Macroglobulinemia](#)
- [Werner syndrome](#)