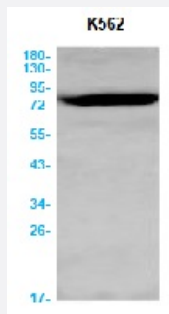


RecomAb™

BRAT1 recombinant monoclonal antibody, clone R02-4D9

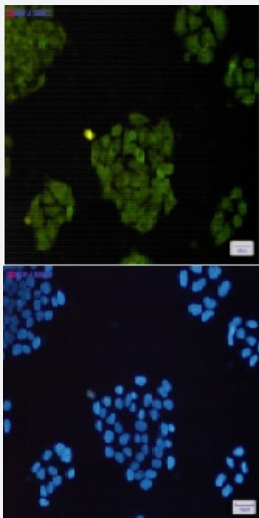
Catalog # RAB01551 Size 100 uL

Applications



Western Blot

Western blot analysis of BRAT1 in K562 lysates using human BRAT1 recombinant monoclonal antibody, clone R02-4D9 (Cat # RAB01551).



Immunocytochemistry

Immunocytochemistry analysis of BRAT1 (green) in HeLa using human BRAT1 recombinant monoclonal antibody, clone R02-4D9 (Cat # RAB01551), and DAPI (blue).

Specification

Product Description	Rabbit recombinant monoclonal antibody raised against human BRAT1.
Antibody Species	Rabbit
Immunogen	Original antibody is raised against recombinant protein corresponding to human BRAT1
Theoretical MW (kDa)	Calculated MW: 88 kD

Reactivity	Human
Form	Liquid
Purification	Affinity purification
Isotype	IgG
Recommend Usage	Immunofluorescence (1:50-1:200) Immunoprecipitation (1:20) Western Blot (1:500-1:1000) The optimal working dilution should be determined by the end user.
Storage Buffer	In 50 mM Tris-Glycine, pH 7.4 (0.15 M NaCl, 40% Glycerol, 0.01% Sodium azide and 0.05% BSA)
Storage Instruction	Store at 4°C for short term. For long term storage store at -20°C. Aliquot to avoid repeated freezing and thawing.
Note	This product contains sodium azide: a POISONOUS AND HAZARDOUS SUBSTANCE which should be handled by trained staff only.

Applications

- Western Blot

Western blot analysis of BRAT1 in K562 lysates using human BRAT1 recombinant monoclonal antibody, clone R02-4D9 (Cat # RAB01551).

- Immunocytochemistry

Immunocytochemistry analysis of BRAT1(green) in Hela using human BRAT1 recombinant monoclonal antibody, clone R02-4D9 (Cat # RAB01551), and DAPI(blue).

- Immunoprecipitation

Gene Info — C7orf27

Entrez GeneID	221927
Protein Accession#	Q6PJG6
Gene Name	C7orf27
Gene Alias	MGC22916
Gene Description	chromosome 7 open reading frame 27

Gene Ontology[Hyperlink](#)**Other Designations**

hypothetical protein LOC221927