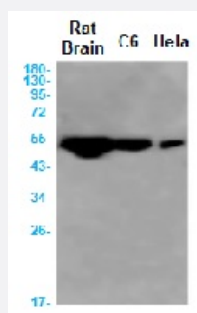


RecomAb™

# CAMK2D recombinant monoclonal antibody, clone R03-8A9

Catalog # RAB01543      Size 100 uL

## Applications



### Western Blot

Western blot analysis of CaMKII delta in rat Brain lysates using human CaMKII delta recombinant monoclonal antibody, clone R03-8A9 (Cat # RAB01543).

## Specification

<b>Product Description</b>	Rabbit recombinant monoclonal antibody raised against synthetic peptide of human CaMKII delta.
<b>Antibody Species</b>	Rabbit
<b>Immunogen</b>	Original antibody is raised against a synthetic peptide corresponding to human CaMKII delta
<b>Theoretical MW (kDa)</b>	Calculated MW: 56 kD
<b>Reactivity</b>	Human
<b>Form</b>	Liquid
<b>Purification</b>	Affinity purification
<b>Isotype</b>	IgG
<b>Recommend Usage</b>	Western Blot (1:500-1:1000) The optimal working dilution should be determined by the end user.
<b>Storage Buffer</b>	In 50 mM Tris-Glycine, pH 7.4 (0.15 M NaCl, 40% Glycerol, 0.01% Sodium azide and 0.05% BSA)

**Storage Instruction**

Store at 4°C for short term. For long term storage store at -20°C.  
Aliquot to avoid repeated freezing and thawing.

**Note**

This product contains sodium azide: a POISONOUS AND HAZARDOUS SUBSTANCE which should be handled by trained staff only.

## Applications

- Western Blot

Western blot analysis of CaMKII delta in rat Brain lysates using human CaMKII delta recombinant monoclonal antibody, clone R03-8A9 (Cat # RAB01543).

## Gene Info — CAMK2D

Entrez GeneID [817](#)

Protein Accession# [Q13557](#)

Gene Name CAMK2D

Gene Alias CAMKD, DKFZp686G23119, DKFZp686I2288, MGC44911

Gene Description calcium/calmodulin-dependent protein kinase II delta

Omim ID [607708](#)

Gene Ontology [Hyperlink](#)

**Gene Summary** The product of this gene belongs to the serine/threonine protein kinase family and to the Ca(2+)/calmodulin-dependent protein kinase subfamily. Calcium signaling is crucial for several aspects of plasticity at glutamatergic synapses. In mammalian cells, the enzyme is composed of four different chains: alpha, beta, gamma, and delta. The product of this gene is a delta chain. Alternative splicing results in multiple transcript variants encoding distinct isoforms. Distinct isoforms of this chain have different expression patterns

**Other Designations** CaM kinase II delta subunit|CaM-kinase II delta chain|CaMK-II delta subunit|OTTHUMP00000163829|OTTHUMP00000163830|calcium/calmodulin-dependent protein kinase (CaM kinase) II delta|calcium/calmodulin-dependent protein kinase type II delta chain

## Pathway

- [Calcium signaling pathway](#)
- [ErbB signaling pathway](#)

- [Glioma](#)
- [GnRH signaling pathway](#)
- [Long-term potentiation](#)
- [Melanogenesis](#)
- [Neurotrophin signaling pathway](#)
- [Olfactory transduction](#)
- [Wnt signaling pathway](#)

## Disease

- [Alcoholism](#)
- [Genetic Predisposition to Disease](#)
- [Mucocutaneous Lymph Node Syndrome](#)
- [Tobacco Use Disorder](#)