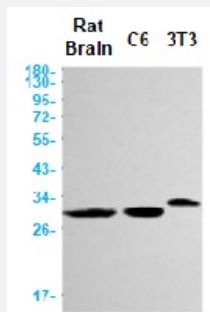


RecomAb™

Ctsb recombinant monoclonal antibody, clone R08-7H4

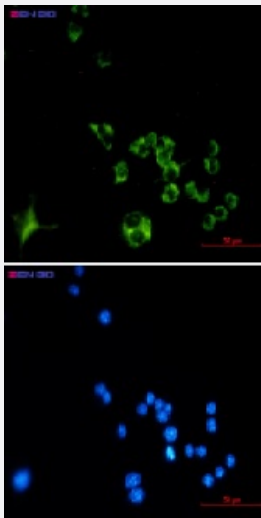
Catalog # RAB01531 Size 100 uL

Applications



Western Blot

Western blot analysis of Cathepsin B in rat Brain, C6, 3T3 lysates using mouse Cathepsin B recombinant monoclonal antibody, clone R08-7H4 (Cat # RAB01531).



Immunocytochemistry

Immunocytochemistry analysis of Cathepsin B (green) in Raw264.7 using mouse Cathepsin B recombinant monoclonal antibody, clone R08-7H4 (Cat # RAB01531), and DAPI(blue).

Specification

Product Description	Rabbit recombinant monoclonal antibody raised against mouse Cathepsin B.
Antibody Species	Rabbit
Immunogen	Original antibody is raised against recombinant protein corresponding to mouse Cathepsin B
Theoretical MW (kDa)	Calculated MW: 37 kD

Reactivity	Mouse
Form	Liquid
Purification	Affinity purification
Isotype	IgG
Recommend Usage	Immunofluorescence (1:50-1:200) Western Blot (1:500-1:1000) The optimal working dilution should be determined by the end user.
Storage Buffer	In 50 mM Tris-Glycine, pH 7.4 (0.15 M NaCl, 40% Glycerol, 0.01% Sodium azide and 0.05% BSA)
Storage Instruction	Store at 4°C for short term. For long term storage store at -20°C. Aliquot to avoid repeated freezing and thawing.
Note	This product contains sodium azide: a POISONOUS AND HAZARDOUS SUBSTANCE which should be handled by trained staff only.

Applications

- Western Blot

Western blot analysis of Cathepsin B in rat Brain, C6, 3T3 lysates using mouse Cathepsin B recombinant monoclonal antibody, clone R08-7H4 (Cat # RAB01531).

- Immunocytochemistry

Immunocytochemistry analysis of Cathepsin B (green) in Raw264.7 using mouse Cathepsin B recombinant monoclonal antibody, clone R08-7H4 (Cat # RAB01531), and DAPI(blue).

Gene Info — Ctsb

Entrez GeneID	13030
Protein Accession#	P10605
Gene Name	Ctsb
Gene Alias	-
Gene Description	cathepsin B
Gene Ontology	Hyperlink
Other Designations	CATHEPSIN B PRECURSOR (CATHEPSIN B1)