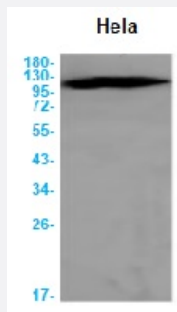


RecomAb™

CBL recombinant monoclonal antibody, clone R01-9G1

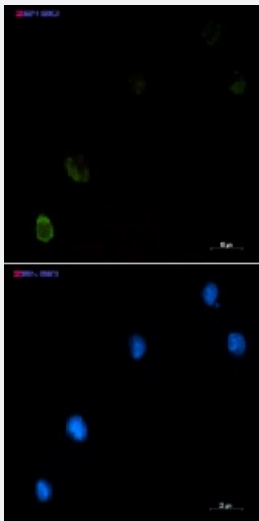
Catalog # RAB01529 Size 100 uL

Applications



Western Blot

Western blot analysis of CBL in HeLa lysates using human CBL recombinant monoclonal antibody, clone R01-9G1 (Cat # RAB01529).



Immunocytochemistry

Immunocytochemistry analysis of CBL (green) in K562 using human CBL recombinant monoclonal antibody, clone R01-9G1 (Cat # RAB01529), and DAPI(blue).

Specification

Product Description	Rabbit recombinant monoclonal antibody raised against synthetic peptide of human CBL.
Antibody Species	Rabbit
Immunogen	Original antibody is raised against a synthetic peptide corresponding to human CBL
Theoretical MW (kDa)	Calculated MW: 100 k

Reactivity	Human
Form	Liquid
Purification	Affinity purification
Isotype	IgG
Recommend Usage	Immunofluorescence (1:50-1:200) Immunoprecipitation (1:20) Western Blot (1:500-1:1000) The optimal working dilution should be determined by the end user.
Storage Buffer	In 50 mM Tris-Glycine, pH 7.4 (0.15 M NaCl, 40% Glycerol, 0.01% Sodium azide and 0.05% BSA)
Storage Instruction	Store at 4°C for short term. For long term storage store at -20°C. Aliquot to avoid repeated freezing and thawing.
Note	This product contains sodium azide: a POISONOUS AND HAZARDOUS SUBSTANCE which should be handled by trained staff only.

Applications

- Western Blot

Western blot analysis of CBL in Hela lysates using human CBL recombinant monoclonal antibody, clone R01-9G1 (Cat # RAB01529).

- Immunocytochemistry

Immunocytochemistry analysis of CBL (green) in K562 using human CBL recombinant monoclonal antibody, clone R01-9G1 (Cat # RAB01529), and DAPI(blue).

- Immunoprecipitation

Gene Info — CBL

Entrez GeneID	867
Protein Accession#	P22681
Gene Name	CBL
Gene Alias	C-CBL, CBL2, RNF55
Gene Description	Cas-Br-M (murine) ecotropic retroviral transforming sequence

Omim ID [165360](#)

Gene Ontology [Hyperlink](#)

Gene Summary The cbl oncogene was first identified as part of a transforming retrovirus which induces mouse pr e-B and pro-B cell lymphomas. As an adaptor protein for receptor protein-tyrosine kinases, it posi tively regulates receptor protein-tyrosine kinase ubiquitination in a manner dependent upon its var iant SH2 and RING finger domains. Ubiquitination of receptor protein-tyrosine kinases terminates signaling by marking active receptors for degradation. [provided by RefSeq

Other Designations oncogene CBL2

Pathway

- [Chronic myeloid leukemia](#)
- [Endocytosis](#)
- [ErbB signaling pathway](#)
- [Insulin signaling pathway](#)
- [Jak-STAT signaling pathway](#)
- [Pathways in cancer](#)
- [T cell receptor signaling pathway](#)
- [Ubiquitin mediated proteolysis](#)

Disease

- [Diabetes Mellitus](#)
- [Disease Progression](#)
- [Genetic Predisposition to Disease](#)
- [Leukemia](#)
- [Tobacco Use Disorder](#)