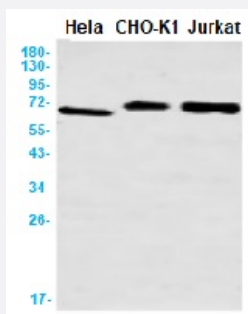


RecomAb™

CDC7 recombinant monoclonal antibody, clone R01-4G6

Catalog # RAB01517 Size 100 uL

Applications



Western Blot

Western blot analysis of CDC7 in HeLa, CHO-K1, Jurkat lysates using human CDC7 recombinant monoclonal antibody, clone R01-4G6 (Cat # RAB01517).

Specification

Product Description	Rabbit recombinant monoclonal antibody raised against human CDC7.
Antibody Species	Rabbit
Immunogen	Original antibody is raised against recombinant protein corresponding to human CDC7
Theoretical MW (kDa)	Calculated MW: 64 kD
Reactivity	Human
Form	Liquid
Purification	Affinity purification
Isotype	IgG
Recommend Usage	Immunoprecipitation (1:20) Western Blot (1:500-1:1000) The optimal working dilution should be determined by the end user.
Storage Buffer	In 50 mM Tris-Glycine, pH 7.4 (0.15 M NaCl, 40% Glycerol, 0.01% Sodium azide and 0.05% BSA)

Storage Instruction

Store at 4°C for short term. For long term storage store at -20°C.
Aliquot to avoid repeated freezing and thawing.

Note

This product contains sodium azide: a POISONOUS AND HAZARDOUS SUBSTANCE which should be handled by trained staff only.

Applications

- Western Blot

Western blot analysis of CDC7 in Hela, CHO-K1, Jurkat lysates using human CDC7 recombinant monoclonal antibody, clone R01-4G6 (Cat # RAB01517).

- Immunoprecipitation

Gene Info — CDC7

Entrez GeneID[8317](#)**Protein Accession#**[O00311](#)**Gene Name**

CDC7

Gene Alias

CDC7L1, HsCDC7, Hsk1, MGC117361, MGC126237, MGC126238, huCDC7

Gene Description

cell division cycle 7 homolog (S. cerevisiae)

Omim ID[603311](#)**Gene Ontology**[Hyperlink](#)**Gene Summary**

This gene encodes a cell division cycle protein with kinase activity that is critical for the G1/S transition. The yeast homolog is also essential for initiation of DNA replication as cell division occurs. Overexpression of this gene product may be associated with neoplastic transformation for some tumors. Multiple alternatively spliced transcript variants that encode the same protein have been detected. [provided by RefSeq]

Other Designations

CDC7 (cell division cycle 7, S. cerevisiae, homolog)-like 1|OTTHUMP00000011788|cell division cycle 7|cell division cycle 7-like protein 1

Pathway

- [Cell cycle](#)

Disease

- [Head and Neck Neoplasms](#)
- [Neoplasm Recurrence](#)
- [Neoplasms](#)