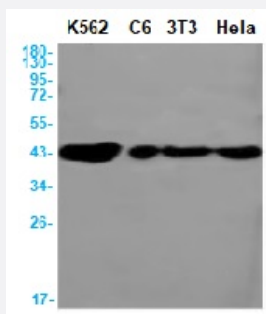


RecomAb™

CDK9 recombinant monoclonal antibody, clone R03-5B9

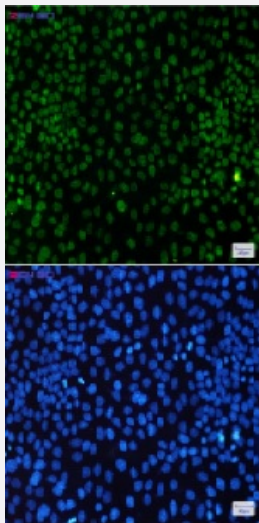
Catalog # RAB01511 Size 100 uL

Applications



Western Blot

Western blot analysis of CDK9 in K562, C6, 3T3, HeLa lysates using human CDK9 recombinant monoclonal antibody, clone R03-5B9 (Cat # RAB01511).



Immunocytochemistry

Immunocytochemistry analysis of CDK9(green) in HeLa using human CDK9 recombinant monoclonal antibody, clone R03-5B9 (Cat # RAB01511), and DAPI(blue).

Specification

Product Description	Rabbit recombinant monoclonal antibody raised against synthetic peptide of human Cdk9.
Antibody Species	Rabbit
Immunogen	Original antibody is raised against a synthetic peptide corresponding to human Cdk9
Theoretical MW (kDa)	Calculated MW: 43 kD

Reactivity	Human
Form	Liquid
Purification	Affinity purification
Isotype	IgG
Recommend Usage	Immunofluorescence (1:50-1:200) Immunohistochemistry (1:50-1/100) Immunoprecipitation (1:20) Western Blot (1:500-1:1000) The optimal working dilution should be determined by the end user.
Storage Buffer	In 50 mM Tris-Glycine, pH 7.4 (0.15 M NaCl, 40% Glycerol, 0.01% Sodium azide and 0.05% BSA)
Storage Instruction	Store at 4°C for short term. For long term storage store at -20°C. Aliquot to avoid repeated freezing and thawing.
Note	This product contains sodium azide: a POISONOUS AND HAZARDOUS SUBSTANCE which should be handled by trained staff only.

Applications

- Western Blot

Western blot analysis of CDK9 in K562, C6, 3T3, Hela lysates using human CDK9 recombinant monoclonal antibody, clone R03-5B9 (Cat # RAB01511).

- Immunohistochemistry (Formalin/PFA-fixed paraffin-embedded sections)

- Immunohistochemistry (Frozen sections)

- Immunocytochemistry

Immunocytochemistry analysis of CDK9(green) in Hela using human CDK9 recombinant monoclonal antibody, clone R03-5B9 (Cat # RAB01511), and DAPI(blue).

- Immunoprecipitation

Gene Info — CDK9

Entrez GeneID [1025](#)

Protein Accession# [P50750](#)

Gene Name	CDK9
Gene Alias	C-2k, CDC2L4, CTK1, PITALRE, TAK
Gene Description	cyclin-dependent kinase 9
Omim ID	603251
Gene Ontology	Hyperlink
Gene Summary	<p>The protein encoded by this gene is a member of the cyclin-dependent protein kinase (CDK) family. CDK family members are highly similar to the gene products of <i>S. cerevisiae</i> cdc28, and <i>S. pombe</i> cdc2, and known as important cell cycle regulators. This kinase was found to be a component of the multiprotein complex TAK/P-TEFb, which is an elongation factor for RNA polymerase II-directed transcription and functions by phosphorylating the C-terminal domain of the largest subunit of RNA polymerase II. This protein forms a complex with and is regulated by its regulatory subunit cyclin T or cyclin K. HIV-1 Tat protein was found to interact with this protein and cyclin T, which suggested a possible involvement of this protein in AIDS. [provided by RefSeq]</p>
Other Designations	CDC2-related kinase OTTHUMP00000022198 cell division protein kinase 9 serine/threonine protein kinase PITALRE